

WITTKOPP ANGUS

36th Annual
Production Sale

Thursday
February 8, 2024

1:00 pm • Glasgow Stockyards • Glasgow, MT

80 Registered Yearling
Angus Bulls

Bulls wintered free until May 1st

80 Commercial Yearling
Angus Heifers

Curt and Sue Wittkopp

Circle, Montana

406-974-3552 (Cell) • 406-485-3552 (Home)

www.wittkoppangus.com



WITKOPP ANGUS

PO Box 260 • Circle, MT 59215

Home 406-485-3552 • Cell 406-974-3552

wipangus@midrivers.com

www.WittkoppAngus.com

Welcome to our 2024 annual production sale. This is our 36th Sale! We are thrilled to be able to continue to do this and thank you for your support. Since we like to sell during a cold snap every year, we are continuing to offer the sale live with Frontier Live Sales so one can bid from the easy chair or the feed truck if sale day is a bit brisk. The sale will also be carried on CattleUSA Live Cattle Auctions.

We still love to see all of our customers and will continue to offer bull viewing at the Glasgow Stockyards along with a tasty lunch, so those who can make it please come early and join us for lunch beginning at 11:30, with the sale starting at 1:00 p.m.

The 80 registered yearling bulls offered for sale are a very uniform group with many outstanding individuals by each sire. This set of bulls offers tremendous length and volume and have been carefully selected based on a desirable combination of maternal and growth traits. We continue to use Angus GS genetic testing for the bull calves and our replacement heifers for increased accuracy in genomic data. Better genomic data gives our customers more accurate selection tools and allows us better selection criteria for moving our herd forward in the direction we are aiming. The American Angus Association has added a new classification for seedstock who possess superior carcass data, the Certified Angus Beef stamp is added on the lots that qualify under this category. We are very pleased to offer many bulls that have qualified for this classification.

At Wittkopp Angus we try many new sires, always working to produce functional cattle that perform in Montana range conditions. We are bringing several new sire groups this year, both AI Sires and herd sires we've acquired in recent years. We are excited about these new genetics and the qualities they bring to our herd and to our customers. Our cow herd has been carefully developed over the past 35 years using the industry's top AI sires and purchased herd sires. The result is an outstanding set of females which are the basis of our program.

This year, we will be offering 80 top quality commercial replacement heifers at the sale. These heifers come from cows with a strong AI sire background and offer excellent maternal traits.

When considering these bulls, bear in mind that they are March and April calves. They are gaining impressively, but will continue to grow and develop over the next few months. As always, the bulls are fed right here at the ranch enabling us to monitor them on a daily basis. Our goal in feeding these bulls is to achieve reasonable growth, yet not jeopardize soundness. After the sale, we bring the bulls back to the ranch to continue their development until they are delivered beginning May 1st.

Feel free to stop by the ranch, 7 miles southeast of Circle on Highway 200 South, to look over the bulls and replacement heifers any time prior to February 6th. Give us a call, we would be happy to visit with you about the sale offering or assist you in choosing a bull to meet your needs. The bulls will be available for viewing at the Glasgow Stockyards beginning February 6th in the afternoon. Thanks to all of you for your friendship and support of our program over the years! We look forward to seeing you sale day.

Best wishes,

Curt & Sue

Don, Michelle & Judd Carroll

Duston, Allison & Dean Stephens



Bull videos available at www.WittkoppAngus.com and www.FrontierLiveSale.com

WITTKOPP ANGUS

36th Annual
Production Sale

Thursday February 8, 2024

Curt and Sue Wittkopp

Circle, Montana

406-974-3552 cell • 406-485-3552 home

www.WittkoppAngus.com

Glasgow Stockyards • Glasgow, MT

Lunch at 11:30 am • Sale at 1:00 pm

80 Registered Yearling Angus Bulls

Bulls wintered free until May 1st

All bulls selling are free from recognized genetic defects by test or pedigree unless otherwise noted.

80 Commercial Yearling Angus Heifers

Sale Day Phones

Curt Wittkopp Cell.(406) 974-3552

Duston Stephens(406) 363-8807

Glasgow Stockyards.(406) 228- 9306

Auctioneer

Joe Goggins.(406) 861-5664

Sale Day Representatives

Matt Wznick, *Western Ag Reporter*(406) 489-2414

Wrye Williams, *Tri-State Livestock*(605) 938-3071

Cattle Inspection

Cattle will be at the ranch (7 miles southeast of Circle on Highway 200 S) through February 5th; the bulls will be at the Glasgow Stockyards beginning February 6th.

Fertility Testing

All bulls will be fertility tested once they have reached 1 year of age. If a bull is determined to be an unsatisfactory breeder, the seller will replace the bull with a bull of equal value, refund the purchase price or issue a credit for a future purchase.

EPDs

EPDs are as of 1/7/2024. Updated EPDs are available at www.Angus.org.

Online Bidding

View the sale and bid online at www.FrontierLiveSale.com or www.CattleUSA.com
See details page 3

Terms and Conditions

- All bulls sell under the Terms and Conditions of the American Angus Association
- Catalog, penning and sale order is determined by date of birth. All bulls will sell in catalog order
- All announcements from the auction block take precedence over any printed material
- The auctioneer has complete charge of the sale. Any dispute in the bidding will be settled by the auctioneer and his decision will be final

Delivery

Free delivery for bulls will be offered within 250 miles. All bulls will be delivered beginning May 1st unless other arrangements have been made.

First Breeding Season Guarantee

First Breeding Season Guarantee: All bulls will be covered 50% by Wittkopp Angus if they are injured during their first breeding season. Breeding season is defined as the 90-day period following the first turnout of bulls. 50% of the value of the injured bull will be given as credit in a future Wittkopp Angus sale or towards a replacement bull if one is available. All injured bulls must be diagnosed by a veterinarian. Please notify us as soon as possible should injury occur and prior to the injured bull being sold for salvage. ALL CLAIMS MUST BE MADE BY SEPTEMBER 15, 2024.



CREATED &
PRINTED BY





Driving the science of better breeding

There's little room for error in the cattle business. Producers need the most advanced information to make smart selection decisions, and Angus Genetics Inc. (AGI) provides it through genomic-enhanced expected progeny differences (GE-EPDs).

GE-EPDs have become the industry standard for herd improvement, building on decades of science-backed genetic evaluation tools originated and maintained through the American Angus Association®, home to the largest and ever-growing single-breed beef cattle database.

EPDs that traditionally contained all pedigree, performance and progeny information now also include results from available genomic, or DNA, tests. Breeders who use genomic technology give buyers access to AGI-generated GE-EPDs that provide:

- Increased predictability and decreased risk for young and unproven animals due to enhanced accuracy of EPDs
- Better characterization of genetics for difficult-to-measure performance traits (such as carcass traits, maternal traits and feed efficiency)
- The ability to make more rapid progress for traits that are important to you, due to:
 - more accurate selection
 - easier identification of genetic outliers
 - the ability to propagate young animals with confidence earlier in their lives

In fact, GE-EPDs on unproven animals have the same amount of accuracy as if they had recorded 10-36 calves, depending on the trait. That's valuable insight, offered regularly through the breed's weekly national cattle evaluation.

Trait	Progeny Equivalent	Trait	Progeny Equivalent
Calving Ease Direct	26	Heifer Pregnancy	17
Birth Weight	23	Calving Ease Maternal	20
Weaning Weight	27	Milk	36
Yearling Weight	23	Mature Weight	15
Dry Matter Intake	12	Mature Height	9
Scrotal Circumference	15	Carcass Weight	15
Docility	12	Yearling Height	17
Claw Set	10	Carcass Marbling	11
Foot Angle	10	Carcass Ribeye	17
		Carcass Fat	14

How do you know if EPDs are genomic-enhanced?

Ask your breeder, refer to the registration paper, or look for the AGI GE-EPD logo, Angus GS™ powered by partner Neogen GeneSeek or the HD50k by partner Zoetis. These images indicate animals for which low-density or high-density genomic testing has been conducted and incorporated by AGI into GE-EPDs



www.angus.org

FRONTIER LIVE SALE

This Sale will be broadcast live on www.frontierlivesale.com. To view a sale,

1. Create an account, if you have already done so skip to next step. To create a new account, click on the word **Registration** in the upper right hand corner. You must fill out the information requested. Then click **Create Account**. An email will be sent to your email account you provided. Please click the link in the email to activate your new account.
2. Once you click the link, your account will now be activated
3. At this point, you may click **Continue To Browse Our Site**. This will allow you to view all upcoming auctions.
4. Once you see the auction you are interested in, click **Get Approved To Bid** for absentee and live bidding.
5. Please enter your information in the form. Depending on the auctioneer, different information may be requested. Click **I agree to sale terms and conditions**. Congratulations! You are now approved for the auction. Now that you're approved you can participate in the auction and bid on its items.
6. Login on sale day with the credentials provided at registration.



Call 866-313-0123 for tech help.

ABOVE AVERAGE GOALS REQUIRE TARGETED BULLS

Aim High

The Targeting the Brand™ logo highlights registered Angus bulls with greater genetic potential to produce calves that meet the most challenging specifications of the *Certified Angus Beef®* brand.

Only 1 in 4 non-parent Angus bulls qualify.

Minimum Genetic Requirements

Marbling EPD (Marb)	+0.65
Dollar Grid Carcass Index (\$G)	+55.0



For more information on Targeting the Brand™ visit CABcattle.com.

AI Reference Sires

Reference Sire **BARSTOW BANKROLL B73**
 Reg: 18036327 DOB: 2/14/2014 Tattoo: B73
 SITZ DASH 10277# SITZ UPWARD 307R#
BARSTOW CASH SITZ EVERELDA ENTENSE 2665
 BARSTOW QUEEN W16 S A V FINAL ANSWER 0035#
 RCA QUEEN R42
 CAR EFFICIENT 534# K C F BENNETT EFFICIENT
BARSTOW MISS DIANNA Z25 CAR MISS SUSIE 308 #
 BARSTOW MISS DIANNA X128# SYDGEN C C & 7#
 BARSTOW MISS DIANNA BA T134

CED	BW	WW	YW	CEM	Milk
+13	-2.0	+57	+117	+10	+23
CW	Marb	RE	Fat	\$W	\$B
+51	+44	+63	+004	+56	+148

One of our favorite sires over the years needs no introduction but, Barstow Bankroll offers an exciting phenotype and has been a phenomenal cross on our first-calf heifers. He is an eye-catcher, adding length and depth to any program. He has outstanding EPDs that place him in the top 4% in BW, the top 10% in CED and the top 20% for docility. He is also in the top 20% for \$F and heifer pregnancy. His proven calving ease and stellar performance is unrivaled by any other calving ease sire we have tried.



BARSTOW BANKROLL B73

Reference Sire **S ARCHITECT 9501**
 Reg: 19437622 DOB: 2/02/2019 Tattoo: 9501
 KM BROKEN BOW 002# SUMMITCREST COMPLETE 1P55#
SYDGEN BLUEPRINT SUMMITCREST PRINCESS 0P12#
 SITZ FLORABELLE FANNY 4735 SITZ INVESTMENT 660Z#
 SITZ FLORABELLE FANNY 2683#
 S WHITLOCK 179# S CHISUM 6175#
S BLOSSOM 7514 S PRIDE ANNA 709#
 S BLOSSOM 5525 CONNEALY COURAGE 25L#
 S BLOSSOM 374#

CED	BW	WW	YW	CEM	Milk
+8	+0.5	+93	+155	+10	+22
CW	Marb	RE	Fat	\$W	\$B
+75	+56	+77	+030	+84	+159

We are very excited to bring our first group of Architect calves to you this year. Architect has a phenomenal maternal EPD profile paired with thick topped, deep-bodied calves. We have been very impressed with how his calves have performed this year, both the males and females. Architect is in the top 1% \$M, the top 2% WW, the top 3% YW, \$W, the top 5% CW, and the top 10% SC.



S ARCHITECT 9501

Reference Sire **DEER VALLEY GROWTH FUND**
 Reg: +18827828 DOB: 1/22/2017 Tattoo: 71122
 BASIN PAYWEIGHT 006S# VERMILION PAYWEIGHT J847#
BASIN PAYWEIGHT 1682# BASIN LUCY 3829
 21AR O LASS 7017 HARB PENDLETON 765 J H#
 21AR O LASS F24A
 PLATTEMERE WEIGH UP K360# SITZ UPWARD 307R#
DEER VALLEY RITA 36113 BARBARA OF PLATTEMERE 337#
 DEER VALLEY RITA 9457 G A R NEW DESIGN 5050#
 G A R EXT 614

CED	BW	WW	YW	CEM	Milk
+8	+1.4	+89	+165	+13	+30
CW	Marb	RE	Fat	\$W	\$B
++85	+50	+78	+056	+92	+177

Growth Fund is one of the sire groups we are most looking forward to bringing to the sale this year. Not only does Growth Fund offer one of the most elite EPD profiles in the breed, his sons are very deep-bodied with a powerful hip and hind leg. His calves are remarkably smooth and will fit into any variety of breeding programs. Growth Fund's EPDs place him in the top 1% for CW, \$W and the top 2% in YW, \$F and top 3% in WW. You won't miss these calves when you see them.



DEER VALLEY GROWTH FUND

AI Reference Sires

Reference Sire **CRAWFORD GUARANTEE 9137**
 Reg: 19526770 DOB: 2/19/2019 Tattoo: 9137
 BASIN PAYWEIGHT 1682# BASIN PAYWEIGHT 006S#
CONNEALY PAYRAISE 21AR O LASS 7017
 PRIDE FAIR OF CONANGA 351 A A R TEN X 7008 S A#
 CONNEALY ARMORY PRIDE FAWN OF CONANGA 1512
CRAWFORD MS ARMORY D40 CONNEALY ARSENAL 2174#
 G A R NEW DAY N2290 EBBA OF CONANGA 808#
 B/R NEW DAY 454#
 G A R OBJECTIVE N906

CED	BW	WW	YW	CEM	Milk
+10	-0.1	+76	+151	+6	+28
CW	Marb	RE	Fat	\$W	\$B
++54	+58	+44	+0.029	+70	+146

If you're looking for a true performance herd sire, look no further than the Guarantee sons! This is one of the most balanced EPD profiles in the breed right now pairing outstanding growth traits with excellent maternal characteristics. These bulls offer tremendous length and depth of rib; they are extremely eye-catching and easy fleshing. Guarantee's EPDs put him in the top 5% for YW, the top 15% for CED and the top 20% for WW.



CRAWFORD GUARANTEE 9137

Reference Sire **KESSLERS COMMODORE 6516**
 Reg: 18545936 DOB: 1/02/2016 Tattoo: 6516
 CONNEALY CONSENSUS 7229# CONNEALY CONSENSUS#
CONNEALY COMRADE 1385# BLUE LILLY OF CONANGA 16
 HAPPY GEE OF CONANGA 919 G A R NEW DESIGN 5050#
 HAP GINA OF CONANGA 260 4965
 SUMMITCREST COMPLETE 1P55# C F RIGHT DESIGN 1802#
KESSLERS RAINBOW 0595 SUMMITCREST ELBA 1M17
 KESSLERS RAINBOW 3043 H A R B CINCHA 829#
 KESSLERS RAINBOW 1042

CED	BW	WW	YW	CEM	Milk
+8	-0.3	+84	+145	+12	+28
CW	Marb	RE	Fat	\$W	\$B
+62	+82	+63	+0.020	+81	+165

A sire that combines powerful calving ease and elite growth with added frame and muscle. The Commodore calves have been an excellent outcross for our breeding program and will be excellent herd sires for many. Commodore has strong maternal genetics with a top 5% \$W and top 10% WW and YW EPDs.

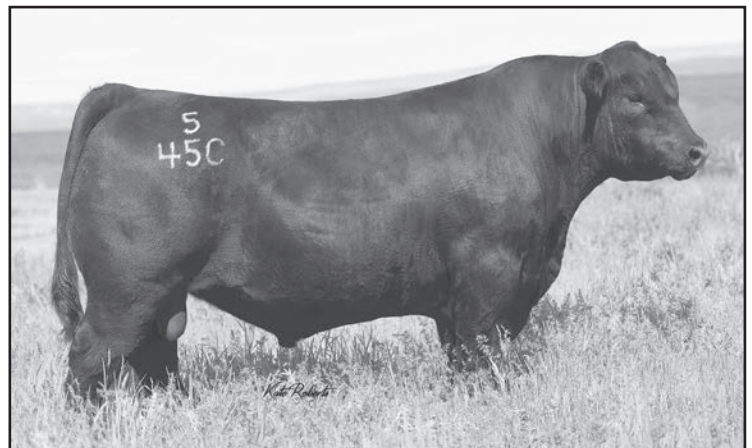


KESSLERS COMMODORE 6516

Reference Sire **CONNEALY NATIONAL 390C**
 Reg: 18498059 DOB: 7/20/2015 Tattoo: 545C
 CONNEALY CAPITALIST 028# S A V FINAL ANSWER 0035#
DEER VALLEY PATRIOT 3222# PRIDES PITA OF CONANGA 8821
 DEER VALLEY RITA 0274 SITZ UPWARD 307R#
 G A R OBJECTIVE 2345
 CONNEALY CONFIDENCE 0100# CONNEALY TOBIN
ELLZA OF CONANGA 390C BECKA GALA OF CONANGA 8281
 ELSHA OF CONANGA 138V CONNEALY CONSENSUS 7229#
 ELGA OF CONANGA 512D

CED	BW	WW	YW	CEM	Milk
+17	-1.5	+67	+117	+8	+34
CW	Marb	RE	Fat	\$W	\$B
++45	+56	+1.15	-.032	+81	+151

This is our first crop of Connealy National calves. National offers top end growth EPDs while maintain excellent calving ease. We used National as an outcross on our first-calf heifers, where we were very pleased with his calving ease! National is in the top 1% CED, the top 5% \$W, the top 10% milk, and the top 20% heifer pregnancy and \$M.



CONNEALY NATIONAL 390C

AI Reference Sires

Reference Sire **BIG DRY TAHOE H7**
 Reg: 19982120 DOB: 3/11/2020 Tattoo: H7

TEHAMA UPWARD Y238 SITZ UPWARD 307R#
 TEHAMA ELITE BLACKBIRD T735

TEHAMA TAHOE B767#
 TEHAMA MARY BLACKBIRD Y684 S A V FINAL ANSWER 0035#
 TEHAMA MARY BLACKBIRD T073

BDAR UPSCALE D69 PLATTEMERE WEIGH UP K360#
BDAR LASS 816F BDAR PRIDE 926W
 BDAR LASS 623D BDAR CONSENSUS Y011
 BDAR LASS 923W

CED	BW	WW	YW	CEM	Milk
+6	+0.7	+81	+144	+3	+33
CW	Marb	RE	Fat	\$W	\$B
+69	+0.98	+6.5	+0.050	+81	+179

Tahoe was purchased from the 2021 Big Dry Angus Ranch Sale, and we are thrilled to have him! Tahoe's calves have consistently been some of the heaviest across the scale from this year's calf crop for both the heifers and the bulls. All his progeny are extremely deep bodied, smooth calves. They catch your eye when you walk in the pen! Tahoe's EPDs are in the top 2% \$W and the top 10% in \$C, \$B WW and YW.

Reference Sire **VERMILION QUARTERBACK G769**
 Reg: 19685388 DOB: 8/15/19 Tattoo: G769

S A V REGARD 4863# S A V RESOURCE 1441#
S A V QUARTERBACK 7933 S A V BLACKCAP MAY 5530#
 S A V BLACKCAP MAY 3525 S A V FINAL ANSWER 0035#
 S A V MAY 2397#

SITZ JLS GAME DAY 9630# GDAR GAME DAY 449#
VERMILION LADY 6797# JLS BARBARAMERE NELL 2238
 VERMILION LADY 2859 CCA HAY BUSTER 846T
 VERMILION LADY 2859 VERMILION LADY 9810

CED	BW	WW	YW	CEM	Milk
+3	+1.6	+90	+154	+8	+30
CW	Marb	RE	Fat	\$W	\$B
+70	+0.29	+8.0	+0.002	+83	+148

A herd sire we purchased from Vermilion Ranch in 2020, Quarterback showcases an outcross pedigree for our cow herd and phenomenal depth of rib and growth in his calves. Consistently throwing thick topped deep bodied calves, Quarterback's sons and daughters are equally impressive. His calves will be sure shot herd sires. His EPDs put him in the top 3% in WW, YW, and \$W and the top 15% in \$M and \$F.



Reference Sire **WIP COMMODORE 1003**
 Reg: 20185601 DOB: 3/01/2021 Tattoo: 1003

CONNEALY COMRADE 1385 CONNEALY CONSENSUS 7229#
KESSLERS COMMODORE 6516 HAPPY GEE OF CONANGA 919
 KESSLERS RAINBOW 0595 SUMMITCREST COMPLETE 1P55#
 KESSLERS RAINBOW 3043

WIP MULTI TOOL POWER 9113 PA POWER TOOL 9108#
 WIP EXTRA POWER 1769 SYDGEN ESTER 9089
 WIP EXTRA POWER 1769 NICHOLS EXTRA K205#
 WIP EXCLUSIVE POWER 3616

CED	BW	WW	YW	CEM	Milk
+5	+4.2	+91	+160	+15	+32
CW	Marb	RE	Fat	\$W	\$B
+70	+0.82	+9.3	+0.018	+72	+173

WIP Commodore is an absolutely standout Kessler Commodore offspring out of a first-calf heifer we kept in 2021. This calf was an eye-catcher from the second he hit the ground, you couldn't ride through his pasture without seeing him. He's got a big hip and tremendous depth, you still can't miss giving him an extra look in the herd sire pasture. We are thrilled to bring his first calves to you. WIP Commodore is in the top 2% in YW, WW, the top 10% in docility and CW, the top 15% in \$B and the top 20% in \$F, \$W and \$G.

Reference Sire **WIP EPIC 9091**
 Reg: 19556616 DOB: 3/20/2019 Tattoo: 9091

VARILEK PRODUCT 2010 04 CONNEALY FINAL PRODUCT#
3F EPIC 4631 VARILEK PEARL 0006 014
 ZEBU QUEEN 1072 EF COMPLEMENT 8088#
 EXG BLACKCAP 6247 PPC

ELLINGSON IDENTITY 9104# TC ABERDEEN 759#
WIP IDENTITY STAR 3202 EA QUEEN DOLLY 1813
 WIP VRD STAR 7028 VERMILION DATELINE 7078#
 WIP KRUGER EULIMA 1046#

CED	BW	WW	YW	CEM	Milk
+4	+1.4	+75	+132	+11	+21
CW	Marb	RE	Fat	\$W	\$B
+54	+0.48	+4.6	+0.041	+67	+133

Epic's progeny speak for themselves, so you won't want to miss out on this sire group. Epic produces a truly uniform group of calves. His sons are moderately framed, incredibly easy fleshing and deep-bodied. These calves will catch your eye in every pen, and he will leave a stamp on your calf crop! With EPDs in the top 15% in WW and the top 20% in YW and \$W, you can't go wrong adding these sons to your breeding program.

Reference Sire **WIP EPIC 9076**
 Reg: 19562518 DOB: 3/19/2019 Tattoo: 9076

VARILEK PRODUCT 2010 04 CONNEALY FINAL PRODUCT#
3F EPIC 4631 VARILEK PEARL 0006 014
 ZEBU QUEEN 1072 EF COMPLEMENT 8088#
 EXG BLACKCAP 6247 PPC

VERMILION DANNY BOY M S283 CONNEALY DANNY BOY#
WIP VDB GIRL 0685 VERMILION M LASS 2020#
 WIP NEBRASKA GIRL 4502 BALDRIDGE NEBRASKA 901#
 WIP BANKER GIRL 2513

CED	BW	WW	YW	CEM	Milk
+10	-2.4	+54	+96	+12	+27
CW	Marb	RE	Fat	\$W	\$B
+37	+0.33	+7.2	+0.007	+60	+118

Another standout Epic son we kept as a herd sire! Epic 9076 also produces a calf crop with an extremely consistent look. Both the Epic males and females have been outstanding additions to our breeding program and will leave their stamp for years to come. Epic 9076 is in the top 2% for BW, and we have had excellent luck with their calving ease.





WIP ANKOPP 1 **WIP BANKROLL 3007**
 Reg: `DOB: 02/26/23Tattoo: 3007

BARSTOW CASH
BARSTOW BANKROLL B73
 BARSTOW MISS DIANNA Z25

WIP EPIC 9091
WIP EPIC LASS 1390
 WIP BANKROLL LASS 8107

SITZ DASH 10277
 BARSTOW QUEEN W16
 CAR EFFICIENT 534
 BARSTOW MISS DIANNA X128

3F EPIC 4631
 WIP IDENTITY STAR 3202
 BARSTOW BANKROLL B73
 W I P 569 LASS 0780

Birth Wt	Adj 205 Wt	12/31/23 Wt	\$W	\$F	\$G	\$B	\$C	
67	530	740	+55	+97	+45	+142	+233	
CED	BW	WW	YW	Milk	CW	Marb	RE	Fat
+14	-2.4	+58	+112	+24	+46	+5.55	+4.48	+0.15

ANGUSGS
Powered by Nogen GenCoat

WIP ANKOPP 4 **WIP BANKROLL 3020**
 Reg: `DOB: 03/03/23Tattoo: 3020

BARSTOW CASH
BARSTOW BANKROLL B73
 BARSTOW MISS DIANNA Z25

WIP EPIC 9091
WIP EPIC GIRL 1250
 WIP FOREFRONT GIRL 3326

SITZ DASH 10277
 BARSTOW QUEEN W16
 CAR EFFICIENT 534
 BARSTOW MISS DIANNA X128

3F EPIC 4631
 WIP IDENTITY STAR 3202
 MYTTY FOREFRONT 70X
 W I P IN FOCUS GIRL 0644

Birth Wt	Adj 205 Wt	12/31/23 Wt	\$W	\$F	\$G	\$B	\$C	
67	614	835	+76	+101	+25	+126	+238	
CED	BW	WW	YW	Milk	CW	Marb	RE	Fat
+10	+0.8	+81	+139	+24	+61	+0.09	+0.71	+0.13

ANGUSGS
Powered by Nogen GenCoat

WIP ANKOPP 2 **WIP TRUE NORTH 3010**
 Reg: `DOB: 03/01/23Tattoo: 3010

S A V RAINFALL 6846
SQUARE B TRUE NORTH 8052
 ELBANNA OF CONANGA 1209

WIP MULTI TOOL 9308
WIP MULTI TOOL LASS 1296
 WIP CAVALRY LASS 9322

COLEMAN CHARLO 0256
 S A V BLACKCAP MAY 4136
 CONNEALY CONSENSUS
 ELBASTA OF CONANGA 9703

SYDGEN MULTI TOOL 2432
 WIP LONGDISTANCE LASSIE 5034
 MYTTY CAVALRY 6318
 WIP 4563 LASS 1818

Birth Wt	Adj 205 Wt	12/31/23 Wt	\$W	\$F	\$G	\$B	\$C	
76	628	710	+68	+61	+56	+116	+228	
CED	BW	WW	YW	Milk	CW	Marb	RE	Fat
+10	-0.9	+55	+90	+28	+25	+8.3	+4.43	+0.58

ANGUSGS
Powered by Nogen GenCoat



WIP ANKOPP 3 **WIP BANKROLL 3016**
 Reg: `DOB: 03/02/23Tattoo: 3016

BARSTOW CASH
BARSTOW BANKROLL B73
 BARSTOW MISS DIANNA Z25

E&B PLUS ONE
WIP PLUS 1 BLOOM 1109
 WIP UPWARD BLOOM 4046

SITZ DASH 10277
 BARSTOW QUEEN W16
 CAR EFFICIENT 534
 BARSTOW MISS DIANNA X128

CONNEALY CONFIDENCE PLUS
 E&B LADY 1023 PRECISION 936
 SITZ UPWARD 307R
 WIP DANNY BLOOM 8575

Birth Wt	Adj 205 Wt	12/31/23 Wt	\$W	\$F	\$G	\$B	\$C	
70	582	830	+61	+83	+40	+123	+237	
CED	BW	WW	YW	Milk	CW	Marb	RE	Fat
+14	-2.1	+51	+104	+31	+40	+5.53	+3.33	+0.45

ANGUSGS
Powered by Nogen GenCoat

WIP ANKOPP 5 **WIP NATIONAL 3026**
 Reg: `DOB: 03/03/23Tattoo: 3026

DEER VALLEY PATRIOT 3222
CONNEALY NATIONAL 390C
 ELLZA OF CONANGA 390C

CONNEALY LEGENDARY 644L
WIP LEGENDARY LASS 1216
 WIP UPWARD LASS 4130

CONNEALY CAPITALIST 028
 DEER VALLEY RITA 0274
 CONNEALY CONFIDENCE 0100
 ELSHA OF CONANGA 138V

QUAKER HILL RAMPAGE 0A36
 JAZZED OF CONANGA 4660
 SITZ UPWARD 307R
 WIP DB LASS 7501

Birth Wt	Adj 205 Wt	12/31/23 Wt	\$W	\$F	\$G	\$B	\$C	
71	586	825	+72	+83	+66	+149	+256	
CED	BW	WW	YW	Milk	CW	Marb	RE	Fat
+6	+1.1	+64	+109	+34	+46	+8.87	+7.77	+0.15

ANGUSGS
Powered by Nogen GenCoat



WIP 9 OPP ANS WIP TRUE NORTH 3045

Reg: `DOB: 03/07/23Tattoo: 3045

S A V RAINFALL 6846
SQUARE B TRUE NORTH 8052
 ELBANNA OF CONANGA 1209

COLEMAN CHARLO 0256
 S A V BLACKCAP MAY 4136
 CONNEALY CONSENSUS
 ELBASTA OF CONANGA 9703

MYTTY CAVALRY 6318
WIP CAVALRY INEZ 1238
 WIP UPSHOT INEZ 3168

MYTTY CAVALRY 3205
 CCC/CPAR COUNTESS 0506
 EXAR UPSHOT 0562B
 WIP PROCLAMATION INEZ 6576

Birth Wt	Adj 205 Wt	12/31/23 Wt	\$W	\$F	\$G	\$B	\$C	
73	603	765	+72	+95	+67	+163	+283	
CED	BW	WW	YW	Milk	CW	Marb	RE	Fat
+8	+1.4	+64	+123	+44	+54	+91	+78	+0.22



WIP 6 OPP ANS WIP BANKROLL 3030

Reg: `DOB: 03/04/23Tattoo: 3030

BARSTOW CASH
BARSTOW BANKROLL B73
 BARSTOW MISS DIANNA Z25

SITZ DASH 10277
 BARSTOW QUEEN W16
 CAR EFFICIENT 534
 BARSTOW MISS DIANNA X128

SITZ BARRICADE 632F
WIP BARRICADE PRIMROSE 1179
 WIP VDB PRIMROSE 2127

SITZ STELLAR 726D
 SITZ BARBARAMERE NELL 765D
 VERMILION DANNY BOY M S283
 IB FORESIGHT PRIMROSE 9105

Birth Wt	Adj 205 Wt	12/31/23 Wt	\$W	\$F	\$G	\$B	\$C	
71	620	830	+68	+89	+55	+145	+251	
CED	BW	WW	YW	Milk	CW	Marb	RE	Fat
+5	+1.1	+77	+132	+20	+54	+60	+82	-0.19



WIP 7 OPP ANS WIP NATIONAL 3031

Reg: `DOB: 03/04/23Tattoo: 3031

DEER VALLEY PATRIOT 3222
CONNEALY NATIONAL 390C
 ELLZA OF CONANGA 390C

CONNEALY CAPITALIST 028
 DEER VALLEY RITA 0274
 CONNEALY CONFIDENCE 0100
 ELSHA OF CONANGA 138V

MAR INNOVATION 251
WIP INNOVATION EULIMA 1154
 WIP WINDY EULIMA 7025

CONNEALY IMPRESSION
 MAR FINAL KAHUNA 856
 MYTTY WINDY 2048
 WIP UPROAR EULIMA 5255

Birth Wt	Adj 205 Wt	12/31/23 Wt	\$W	\$F	\$G	\$B	\$C	
69	592	700	+73	+77	+66	+143	+262	
CED	BW	WW	YW	Milk	CW	Marb	RE	Fat
+12	+0.3	+63	+105	+35	+39	+74	+1.09	-0.18



WIP 10 PP ANS WIP COMMODORE 3065

Reg: `DOB: 03/16/23Tattoo: 3065

CONNEALY COMRADE 1385
KESSLERS COMMODORE 6516
 KESSLERS RAINBOW 0595

CONNEALY CONSENSUS 7229
 HAPPY GEE OF CONANGA 919
 SUMMITCREST COMPLETE 1P55
 KESSLERS RAINBOW 3043

MYTTY IN FOCUS
WIP INFOCUS ELBAMERE 2022
 I B DANNY BOY ELBAMERE 0797

S A F FOCUS OF E R
 MYTTY COUNTESS 906
 VERMILION DANNY BOY M S283
 I B NEBRASKA ELBAMERE 503

Birth Wt	Adj 205 Wt	12/31/23 Wt	\$W	\$F	\$G	\$B	\$C	
81	605	870	+76	+90	+57	+148	+259	
CED	BW	WW	YW	Milk	CW	Marb	RE	Fat
+4	+1.2	+72	+120	+30	+48	+77	+56	+0.22



WIP 8 OPP ANS WIP BANKROLL 3035

Reg: `DOB: 03/05/23Tattoo: 3035

BARSTOW CASH
BARSTOW BANKROLL B73
 BARSTOW MISS DIANNA Z25

SITZ DASH 10277
 BARSTOW QUEEN W16
 CAR EFFICIENT 534
 BARSTOW MISS DIANNA X128

G A R ASHLAND
SS ASHLAND LASSIE 1089
 WIP EXTRA LASSIE 1669

G A R EARLY BIRD
 CHAIR ROCK AMBUSH 1018
 NICHOLS EXTRA K205
 WIP STRATEGY LASSIE 5008

Birth Wt	Adj 205 Wt	12/31/23 Wt	\$W	\$F	\$G	\$B	\$C	
71	655	865	+58	+102	+35	+137	+216	
CED	BW	WW	YW	Milk	CW	Marb	RE	Fat
+13	-1.0	+72	+126	+16	+58	+4.0	+4.1	+0.32



WIP 11 OPP ANS WIP ARCHITECT 3069

Reg: `DOB: 03/16/23Tattoo: 3069

SYDGEN BLUEPRINT
S ARCHITECT 9501
 S BLOSSOM 7514

KM BROKEN BOW 002
 SITZ FLORABELLE FANNY 4735
 S WHITLOCK 179
 S BLOSSOM 5525

POSS ELEMENT 215
WIP ELEMENT ELINE 7157
 WIP VDB ELINE 2312

POSS EASY IMPACT 0119
 POSS ERICA 004
 VERMILION DANNY BOY M S283
 WIP 7533 ELINE 9262

Birth Wt	Adj 205 Wt	12/31/23 Wt	\$W	\$F	\$G	\$B	\$C	
64	544	805	+81	+103	+36	+139	+260	
CED	BW	WW	YW	Milk	CW	Marb	RE	Fat
+8	-0.7	+79	+141	+33	+65	+2.8	+7.1	-0.01



WIP 12^{PP} WIP COMMODORE 3070
 Reg: `DOB: 03/17/23Tattoo: 3070

CONNEALY COMRADE 1385
KESSLERS COMMODORE 6516
 KESSLERS RAINBOW 0595

CONNEALY CONSENSUS 7229
 HAPPY GEE OF CONANGA 919
 SUMMITCREST COMPLETE 1P55
 KESSLERS RAINBOW 3043

CONNEALY CONSENSUS 7229
WIP CONSENSUS LASS 6146
 IB NEBRASKA LASS 703

CONNEALY CONSENSUS
 BLUE LILLY OF CONANGA 16
 BALDRIDGE NEBRASKA 901
 I B VRD LASS 516

Birth Wt	Adj 205 Wt	12/31/23 Wt	\$W	\$F	\$G	\$B	\$C	
80	560	805	+81	+106	+44	+151	+275	
CED	BW	WW	YW	Milk	CW	Marb	RE	Fat
+9	+0.9	+87	+146	+23	+67	+4.2	+7.9	-.003

ANGUS^{GS}
Powered by Nogen GeneCo



WIP 13^{PP} WIP GROWTH FUND 3071
 Reg: `DOB: 03/17/23Tattoo: 3071

BASIN PAYWEIGHT 1682
DEER VALLEY GROWTH FUND
 DEER VALLEY RITA 36113

BASIN PAYWEIGHT 006S
 21AR O LASS 7017
 PLATTEMERE WEIGH UP K360
 DEER VALLEY RITA 9457

CONNEALY COMRADE 1385
WIP COMRADE SPRINKLE
 WIP FOREFRONT SPRINKLE 2232

CONNEALY CONSENSUS 7229
 HAPPY GEE OF CONANGA 919
 MYTTY FOREFRONT 70X
 W I P N123 SPRINKLE 5063

Birth Wt	Adj 205 Wt	12/31/23 Wt	\$W	\$F	\$G	\$B	\$C	
82	680	875	+67	+115	+50	+165	+263	
CED	BW	WW	YW	Milk	CW	Marb	RE	Fat
+13	-0.4	+74	+139	+24	+61	+6.8	+3.6	+0.25

ANGUS^{GS}
Powered by Nogen GeneCo

WIP 14^{PP} WIP TAHOE 3075
 Reg: `DOB: 03/17/23Tattoo: 3075

TEHAMA TAHOE B767
BIG DRY TAHOE H7
 BDAR LASS 816F

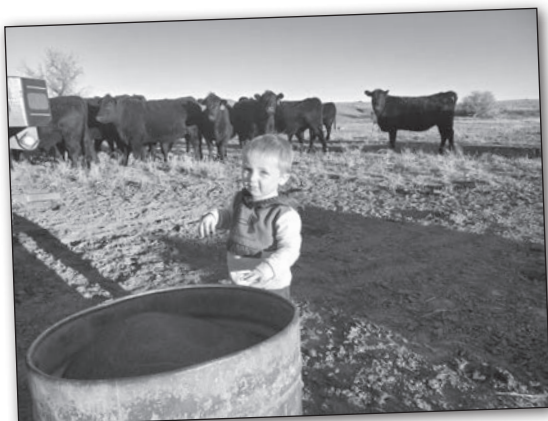
TEHAMA UPWARD Y238
 TEHAMA MARY BLACKBIRD Y684
 BDAR UPSCALE D69
 BDAR LASS 623D

CONNEALY COMRADE 1385
WIP COMRADE LASSIE 5153
 WIP IN FOCUS LASSIE 9060

CONNEALY CONSENSUS 7229
 HAPPY GEE OF CONANGA 919
 MYTTY IN FOCUS
 WIP 878 LASSIE 7019

Birth Wt	Adj 205 Wt	12/31/23 Wt	\$W	\$F	\$G	\$B	\$C	
76	676	815	+90	+79	+79	+159	+299	
CED	BW	WW	YW	Milk	CW	Marb	RE	Fat
+10	-2.4	+69	+118	+39	+44	+1.28	+3.1	+0.28

ANGUS^{GS}
Powered by Nogen GeneCo



WIP 15^{PP} WIP ARCHITECT 3082
 Reg: `DOB: 03/18/23Tattoo: 3082

SYDGEN BLUEPRINT
S ARCHITECT 9501
 S BLOSSOM 7514

KM BROKEN BOW 002
 SITZ FLORABELLE FANNY 4735
 S WHITLOCK 179
 S BLOSSOM 5525

VERMILION MABRY
WIP MABRY LASSIE 6063
 WIP FOCUS LASSIE 8595

CONNEALY DUBLIN 8223
 VERMILION LUCY 9508
 MYTTY IN FOCUS
 W I P EXCLUSIVE LASSIE 1589

Birth Wt	Adj 205 Wt	12/31/23 Wt	\$W	\$F	\$G	\$B	\$C	
90	546	810	+61	+83	+45	+128	+238	
CED	BW	WW	YW	Milk	CW	Marb	RE	Fat
+6	+1.3	+69	+116	+19	+44	+5.6	+4.1	+0.11

ANGUS^{GS}
Powered by Nogen GeneCo



W 16^{PP} WIP ARCHITECT 3087
 Reg: `DOB: 03/19/23Tattoo: 3087

SYDGEN BLUEPRINT
S ARCHITECT 9501
 S BLOSSOM 7514

ELLINGSON IDENTITY 9104
WIP IDENTITY ELINE 4013
 WIP INFOCUS ELINE 2027

KM BROKEN BOW 002
 SITZ FLORABELLE FANNY 4735
 S WHITLOCK 179
 S BLOSSOM 5525
 TC ABERDEEN 759
 EA QUEEN DOLLY 7813
 MYTTY IN FOCUS
 W I P 569 ELINE 0749

Birth Wt	Adj 205 Wt	12/31/23 Wt	\$W	\$F	\$G	\$B	\$C	
78	663	875	+83	+99	+57	+155	+285	
CED	BW	WW	YW	Milk	CW	Marb	RE	Fat
+15	-1.9	+73	+135	+35	+58	+84	+46	+0.57

ANGUSGS
Powered by Nogen GenCoat

W 18^{PP} WIP ARCHITECT 3090
 Reg: `DOB: 03/19/23Tattoo: 3090

SYDGEN BLUEPRINT
S ARCHITECT 9501
 S BLOSSOM 7514

VERMILION SPUR D162
WIP VR SPUR INEZ 8316
 WIP WINDY INEZ 5068

KM BROKEN BOW 002
 SITZ FLORABELLE FANNY 4735
 S WHITLOCK 179
 S BLOSSOM 5525
 CONNEALY SPUR
 VERMILION DIXIE ERICA 3312
 MYTTY WINDY 2048
 WIP VRD INEZ 8534

Birth Wt	Adj 205 Wt	12/31/23 Wt	\$W	\$F	\$G	\$B	\$C	
89	594	900	+83	+69	+66	+135	+294	
CED	BW	WW	YW	Milk	CW	Marb	RE	Fat
+14	-0.4	+71	+120	+31	+39	+94	+73	+0.48

ANGUSGS
Powered by Nogen GenCoat

W 17^{PP} WIP GROWTH FUND 3088
 Reg: `DOB: 03/19/23Tattoo: 3088

BASIN PAYWEIGHT 1682
DEER VALLEY GROWTH FUND
 DEER VALLEY RITA 36113

EXAR UPSHOT 0562B
WIP UPSHOT ELINE 4085
 WIP 7533 ELINE 9262

BASIN PAYWEIGHT 006S
 21AR O LASS 7017
 PLATTEMERE WEIGH UP K360
 DEER VALLEY RITA 9457
 SITZ UPWARD 307R
 EXAR BARBARA T020
 WIP 569 NEW DESIGN 7533
 W I P VRD ELINE 5554

Birth Wt	Adj 205 Wt	12/31/23 Wt	\$W	\$F	\$G	\$B	\$C	
85	703	895	+75	+96	+47	+143	+267	
CED	BW	WW	YW	Milk	CW	Marb	RE	Fat
+13	-1.1	+78	+139	+22	+57	+57	+69	+0.38

ANGUSGS
Powered by Nogen GenCoat



W 19^{PP} WIP GROWTH FUND 3097
 Reg: `DOB: 03/19/23Tattoo: 3097

BASIN PAYWEIGHT 1682
DEER VALLEY GROWTH FUND
 DEER VALLEY RITA 36113

SITZ THUNDERBOLT 0189
WIP THUNDERBOLT BLOOM 6006
 WIP FOREFRONT BLOOM 4158

BASIN PAYWEIGHT 006S
 21AR O LASS 7017
 PLATTEMERE WEIGH UP K360
 DEER VALLEY RITA 9457
 CONNEALY THUNDER
 SITZ ELSIEMERE 1779
 MYTTY FOREFRONT 70X
 WIP 569 BLOOM 1828

Birth Wt	Adj 205 Wt	12/31/23 Wt	\$W	\$F	\$G	\$B	\$C	
87	681	960	+79	+124	+61	+185	+305	
CED	BW	WW	YW	Milk	CW	Marb	RE	Fat
+1	+1.7	+85	+144	+26	+79	+88	+53	+0.34

ANGUSGS
Powered by Nogen GenCoat





W 22^{PP} WIP GROWTH FUND 3129
 Reg: `DOB: 03/22/23Tattoo: 3129

BASIN PAYWEIGHT 1682
DEER VALLEY GROWTH FUND
 DEER VALLEY RITA 36113

EXAR UPSHOT 0562B
WIP UPSHOT PRIDE 4186
 WIP NEBRASKA PRIDE 7524

BASIN PAYWEIGHT 006S
 21AR O LASS 7017
 PLATTEMERE WEIGH UP K360
 DEER VALLEY RITA 9457

SITZ UPWARD 307R
 EXAR BARBARA T020
 BALDRIDGE NEBRASKA 901
 W I P ALLIANCE PRIDE 5637

Birth Wt	Adj 205 Wt	12/31/23 Wt	\$W	\$F	\$G	\$B	\$C	
89	609	940	+71	+112	+23	+135	+237	
CED	BW	WW	YW	Milk	CW	Marb	RE	Fat
-2	+3.0	+76	+134	+29	+66	+1.18	+4.46	+0.57

ANGUSGS
Powered by Nogen GenCoat

W 20^{PP} WIP QUARTERBACK 3109
 Reg: `DOB: 03/21/23Tattoo: 3109

S A V QUARTERBACK 7933
VERMILION QUARTERBACK G769
 VERMILION LADY 6797

MYTTY CAVALRY 6318
WIP CAVALRY LASS 0280
 WIP WAR PARTY LASS 6133

S A V REGARD 4863
 S A V BLACKCAP MAY 3525
 SITZ JLS GAME DAY 9630
 VERMILION LADY 2859

MYTTY CAVALRY 3205
 CCC/CPAR COUNTESS 0506
 WERNER WAR PARTY 2417
 IB 569 LASS 9001

Birth Wt	Adj 205 Wt	12/31/23 Wt	\$W	\$F	\$G	\$B	\$C	
83	666	930	+78	+91	+32	+122	+228	
CED	BW	WW	YW	Milk	CW	Marb	RE	Fat
+0	+2.9	+82	+137	+33	+61	+1.17	+0.78	-0.07

ANGUSGS
Powered by Nogen GenCoat

W 23^{PP} WIP ARCHITECT 3133
 Reg: `DOB: 03/22/23Tattoo: 3133

SYDGEN BLUEPRINT
S ARCHITECT 9501
 S BLOSSOM 7514

MYTTY WINDY 2048
WIP WINDY WITCH 4341
 IB FOCUS WITCH 1622

KM BROKEN BOW 002
 SITZ FLORABELLE FANNY 4735
 S WHITLOCK 179
 S BLOSSOM 5525

H A R B WINDY 758 J H
 MYTTY BAR MAID 38W
 MYTTY IN FOCUS
 IB 569 WITCH 9038

Birth Wt	Adj 205 Wt	12/31/23 Wt	\$W	\$F	\$G	\$B	\$C	
93	588	880	+60	+86	+44	+130	+242	
CED	BW	WW	YW	Milk	CW	Marb	RE	Fat
+6	+1.2	+62	+119	+28	+47	+4.49	+0.65	+0.17

ANGUSGS
Powered by Nogen GenCoat



W 24^{PP} WIP GUARANTEE 3135
 Reg: `DOB: 03/22/23Tattoo: 3135

CONNEALY PAYRAISE
CRAWFORD GUARANTEE 9137
 CRAWFORD MS ARMORY D40

BASIN ADVANCE 3134
WIP ADVANCE STAR 7071
 WIP XFACT STAR 1695

BASIN PAYWEIGHT 1682
 PRIDE FAIR OF CONANGA 351
 CONNEALY ARMORY
 G A R NEW DAY N2290

G A R PROGRESS
 BASIN O LASS 1663
 VERMILION X FACTOR
 W I P TWISTER STAR 4656

Birth Wt	Adj 205 Wt	12/31/23 Wt	\$W	\$F	\$G	\$B	\$C	
85	664	825	+79	+89	+55	+144	+240	
CED	BW	WW	YW	Milk	CW	Marb	RE	Fat
+8	+0.6	+72	+131	+37	+48	+0.78	+0.38	+0.22

ANGUSGS
Powered by Nogen GenCoat

W 21^{PP} WIP COMMODORE 3119
 Reg: `DOB: 03/21/23Tattoo: 3119

CONNEALY COMRADE 1385
KESSLERS COMMODORE 6516
 KESSLERS RAINBOW 0595

SITZ THUNDERBOLT 0189
WIP THUNDERBOLT PRIDE 6041
 WIP MABRY PRIDE 4163

CONNEALY CONSENSUS 7229
 HAPPY GEE OF CONANGA 919
 SUMMITCREST COMPLETE 1P55
 KESSLERS RAINBOW 3043

CONNEALY THUNDER
 SITZ ELSIEMERE 1779
 VERMILION MABRY
 WIP N123 PRIDE 8577

Birth Wt	Adj 205 Wt	12/31/23 Wt	\$W	\$F	\$G	\$B	\$C	
92	665	875	+71	+111	+64	+175	+299	
CED	BW	WW	YW	Milk	CW	Marb	RE	Fat
+5	+2.3	+86	+145	+18	+72	+0.78	+0.91	-0.01

ANGUSGS
Powered by Nogen GenCoat

W 25^{PP} WIP COMMODORE 3136
 Reg: `DOB: 03/22/23Tattoo: 3136

CONNEALY COMRADE 1385
KESSLERS COMMODORE 6516
 KESSLERS RAINBOW 0595

BRUIN UPROAR 0070
WIP UPROAR INEZ 7113
 WIP VDB INEZ 9062

CONNEALY CONSENSUS 7229
 HAPPY GEE OF CONANGA 919
 SUMMITCREST COMPLETE 1P55
 KESSLERS RAINBOW 3043

SITZ UPWARD 307R
 FALCON BLACKBIRD 6071
 VERMILION DANNY BOY M S283
 WIP VRD INEZ 7556

Birth Wt	Adj 205 Wt	12/31/23 Wt	\$W	\$F	\$G	\$B	\$C	
86	642	895	+75	+123	+51	+174	+286	
CED	BW	WW	YW	Milk	CW	Marb	RE	Fat
-3	+3.5	+93	+161	+24	+79	+0.48	+0.90	-0.25

ANGUSGS
Powered by Nogen GenCoat

WIP ARCHITECT 3140
 Reg: `DOB: 03/22/23Tattoo: 3140

SYDGEN BLUEPRINT
S ARCHITECT 9501
 S BLOSSOM 7514

BDAR SIGNATURE B437
WIP SIGNATURE BLOSSOM 6296
 IB 878 BLOSSOM 727

KM BROKEN BOW 002
 SITZ FLORABELLE FANNY 4735
 S WHITLOCK 179
 S BLOSSOM 5525
 BOYD SIGNATURE 1014
 BDAR QUEEN MOTHER 015X
 BON VIEW NEW DESIGN 878
 I B BLOSSOM 244

Birth Wt	Adj 205 Wt	12/31/23 Wt	\$W	\$F	\$G	\$B	\$C	
86	558	815	+73	+106	+44	+150	+265	
CED	BW	WW	YW	Milk	CW	Marb	RE	Fat
+8	+2.3	+83	+142	+26	+64	+30	+99	-.045

ANGUS GS
Powered by Nogen Genetics



WIP ARCHITECT 3143
 Reg: `DOB: 03/23/23Tattoo: 3143

SYDGEN BLUEPRINT
S ARCHITECT 9501
 S BLOSSOM 7514

STYLES UPGRADE J59
WIP UPGRADE JET 2062
 W I P N123 JET 5634

KM BROKEN BOW 002
 SITZ FLORABELLE FANNY 4735
 S WHITLOCK 179
 S BLOSSOM 5525
 SITZ UPWARD 307R
 PLAINVIEW LASSIE 71B
 VERMILION 7078 DATELINE N123
 W I P VOLTAGE JET 8094

Birth Wt	Adj 205 Wt	12/31/23 Wt	\$W	\$F	\$G	\$B	\$C	
88	667	915	+89	+97	+65	+162	+304	
CED	BW	WW	YW	Milk	CW	Marb	RE	Fat
+8	+0.7	+81	+134	+41	+65	+77	+1.01	-.001

ANGUS GS
Powered by Nogen Genetics



WIP ARCHITECT 3142
 Reg: `DOB: 03/23/23Tattoo: 3142

SYDGEN BLUEPRINT
S ARCHITECT 9501
 S BLOSSOM 7514

ELLINGSON IDENTITY 9104
WIP IDENTITY KINCHTRY 4029
 WIP UPGRADE KINCHTRY 2156

KM BROKEN BOW 002
 SITZ FLORABELLE FANNY 4735
 S WHITLOCK 179
 S BLOSSOM 5525
 TC ABERDEEN 759
 EA QUEEN DOLLY 7813
 STYLES UPGRADE J59
 I B N123 KINCHTRY 615

Birth Wt	Adj 205 Wt	12/31/23 Wt	\$W	\$F	\$G	\$B	\$C	
81	583	815	+82	+105	+42	+147	+294	
CED	BW	WW	YW	Milk	CW	Marb	RE	Fat
+1	+1.2	+73	+123	+34	+64	+42	+63	-.003

ANGUS GS
Powered by Nogen Genetics

WIP EPIC 3156
 Reg: `DOB: 03/23/23Tattoo: 3156

3F EPIC 4631
WIP EPIC 9076
 W I P VDB GIRL 0685

MOHNEN LONG DISTANCE 1639
WIP LONGDISTANCE LASSIE 5034
 WIP 569 LASSIE 3128

VARILEK PRODUCT 2010 04
 ZEBO QUEEN 1072
 VERMILION DANNY BOY M S283
 W I P NEBRASKA GIRL 4502
 MOHNEN BRUSHPOPPER 295
 BALDRIDGE BLACKBIRD M565
 GDAR NEW DESIGN 569
 WIP IN FOCUS LASSIE 9025

Birth Wt	Adj 205 Wt	12/31/23 Wt	\$W	\$F	\$G	\$B	\$C	
90	664	805	+61	+74	+47	+121	+218	
CED	BW	WW	YW	Milk	CW	Marb	RE	Fat
+9	-1.3	+53	+90	+28	+26	+59	+46	+0.019

ANGUS GS
Powered by Nogen Genetics



WITTKOPP
ANGUS



WIP 30^{PP} WIP GROWTH FUND 3159
 Reg: `DOB: 03/24/23Tattoo: 3159

BASIN PAYWEIGHT 1682
DEER VALLEY GROWTH FUND
 DEER VALLEY RITA 36113

BDAR SIGNATURE B437
WIP SIGNATURE LASSIE 6062
 WIP VDB LASSIE 9126

BASIN PAYWEIGHT 006S
 21AR O LASS 7017
 PLATTEMERE WEIGH UP K360
 DEER VALLEY RITA 9457

BOYD SIGNATURE 1014
 BDAR QUEEN MOTHER 015X
 VERMILION DANNY BOY M S283
 W I P KRUGER LASSIE 1097

Birth Wt	Adj 205 Wt	12/31/23 Wt	\$W	\$F	\$G	\$B	\$C	
89	639	975	+76	+136	+45	+181	+290	
CED	BW	WW	YW	Milk	CW	Marb	RE	Fat
+2	+2.8	+92	+164	+26	+83	+37	+98	-.014

ANGUSGS
Powered by Nogen GenCo



WIP 32^{PP} WIP GROWTH FUND 3169
 Reg: `DOB: 03/24/23Tattoo: 3169

BASIN PAYWEIGHT 1682
DEER VALLEY GROWTH FUND
 DEER VALLEY RITA 36113

SITZ UPWARD 307R
WIP UPWARD PRIDE 4092
 IB WIP VRD PRIDE 653

BASIN PAYWEIGHT 006S
 21AR O LASS 7017
 PLATTEMERE WEIGH UP K360
 DEER VALLEY RITA 9457

CONNELLY ONWARD
 SITZ HENRIETTA PRIDE 81M
 W I P VRD 4563
 I B KINCHTRY 2001

Birth Wt	Adj 205 Wt	12/31/23 Wt	\$W	\$F	\$G	\$B	\$C	
82	666	925	+77	+112	+34	+146	+270	
CED	BW	WW	YW	Milk	CW	Marb	RE	Fat
+8	+1.6	+84	+149	+28	+75	+33	+73	+.056

ANGUSGS
Powered by Nogen GenCo



WIP 31^{PP} WIP COMMODORE 3160
 Reg: `DOB: 03/24/23Tattoo: 3160

CONNELLY COMRADE 1385
KESSLERS COMMODORE 6516
 KESSLERS RAINBOW 0595

EXAR UPSHOT 0562B
WIP UPSHOT LASSIE 4072
 W I P LASSIE 4574

CONNELLY CONSENSUS 7229
 HAPPY GEE OF CONANGA 919
 SUMMITCREST COMPLETE 1P55
 KESSLERS RAINBOW 3043

SITZ UPWARD 307R
 EXAR BARBARA T020
 VERMILION DATELINE K059
 W I P CHAVEZ LASSIE 1550

Birth Wt	Adj 205 Wt	12/31/23 Wt	\$W	\$F	\$G	\$B	\$C	
90	660	835	+80	+94	+41	+135	+264	
CED	BW	WW	YW	Milk	CW	Marb	RE	Fat
+5	+2.1	+80	+130	+27	+57	+34	+79	-.010

ANGUSGS
Powered by Nogen GenCo



WIP 33^{PP} WIP ARCHITECT 3171
 Reg: `DOB: 03/24/23Tattoo: 3171

SYDGEN BLUEPRINT
S ARCHITECT 9501
 S BLOSSOM 7514

SINCLAIR BOSS
VERMILION ERICA 3080
 VERMILION ERICA 1483

KM BROKEN BOW 002
 SITZ FLORABELLE FANNY 4735
 S WHITLOCK 179
 S BLOSSOM 5525

SINCLAIR GRASS MASTER
 SINCLAIR LADY 6P69 3M18
 VERMILION NEBRASKA T205
 VERMILION ERICA 8489

Birth Wt	Adj 205 Wt	12/31/23 Wt	\$W	\$F	\$G	\$B	\$C	
82	652	925	+82	+78	+54	+131	+265	
CED	BW	WW	YW	Milk	CW	Marb	RE	Fat
+7	+0.8	+77	+129	+29	+52	+66	+87	+.047

ANGUSGS
Powered by Nogen GenCo



36^{PP} WIP GUARANTEE 3178
 Reg: `DOB: 03/25/23Tattoo: 3178

CONNEALY PAYRAISE
CRAWFORD GUARANTEE 9137
 CRAWFORD MS ARMORY D40

BASIN PAYWEIGHT 1682
 PRIDE FAIR OF CONANGA 351
 CONNEALY ARMORY
 G A R NEW DAY N2290

EXAR UPSHOT 0562B
WIP UPSHOT PRIMROSE 3098
 I B 2018 PRIMROSE 550

SITZ UPWARD 307R
 EXAR BARBARA T020
 W I P 5175 BANDO 2018
 I B PRIMROSE 099

Birth Wt	Adj 205 Wt	12/31/23 Wt	\$W	\$F	\$G	\$B	\$C	
63	625	895	+85	+86	+62	+148	+274	
CED	BW	WW	YW	Milk	CW	Marb	RE	Fat
+16	-1.2	+78	+143	+34	+54	+0.87	+0.60	+0.29

ANGUSGS
Powered by Nogen GenCo

34^{PP} WIP COMMODORE 3172
 Reg: `DOB: 03/24/23Tattoo: 3172

CONNEALY COMRADE 1385
KESSLERS COMMODORE 6516
 KESSLERS RAINBOW 0595

CONNEALY CONSENSUS 7229
 HAPPY GEE OF CONANGA 919
 SUMMITCREST COMPLETE 1P55
 KESSLERS RAINBOW 3043

BRUNS BLASTER
SS BLASTER ERICA 0146
 VERMILION ERICA 3080

MOGCK BULLSEYE
 BALDRIDGE BLACKBIRD 11 BAF
 SINCLAIR BOSS
 VERMILION ERICA 1483

Birth Wt	Adj 205 Wt	12/31/23 Wt	\$W	\$F	\$G	\$B	\$C	
77	626	875	+84	+101	+27	+128	+247	
CED	BW	WW	YW	Milk	CW	Marb	RE	Fat
+3	+2.6	+89	+146	+28	+67	+0.26	+0.54	+0.069

ANGUSGS
Powered by Nogen GenCo

37^{PP} WIP FULL MEASURE 3182
 Reg: `DOB: 03/25/23Tattoo: 3182

KB-FULL MEASURE C40
WIP FULL MEASURE 1166
 WIP IDENTITY KINOCENTRY 4029

PLATTEMERE WEIGH UP K360
 KB-EMMA-TEN X-B02
 ELLINGSON IDENTITY 9104
 WIP UPGRADE KINOCENTRY 2156

GDAR WINDY 3110
WIP GDAR WINDY STAR 8139
 WIP VDB STAR 9135

APEX WINDY 078
 GDAR MISS BLACKCAP 556
 VERMILION DANNY BOY M S283
 W I P ULTRA STAR 3044

Birth Wt	Adj 205 Wt	12/31/23 Wt	\$W	\$F	\$G	\$B	\$C	
87	635	760	+75	+76	+55	+131	+250	
CED	BW	WW	YW	Milk	CW	Marb	RE	Fat
+7	+0.1	+58	+94	+38	+37	+0.51	+0.87	-0.066

ANGUSGS
Powered by Nogen GenCo



35^{PP} WIP GROWTH FUND 3174
 Reg: `DOB: 03/24/23Tattoo: 3174

BASIN PAYWEIGHT 1682
DEER VALLEY GROWTH FUND
 DEER VALLEY RITA 36113

BASIN PAYWEIGHT 0065
 21AR O LASS 7017
 PLATTEMERE WEIGH UP K360
 DEER VALLEY RITA 9457

BDAR SIGNATURE B437
WIP SIGNATURE PRIDE 6129
 WIP UPGRADE PRIDE 2071

BOYD SIGNATURE 1014
 BDAR QUEEN MOTHER 015X
 STYLES UPGRADE J59
 WIP NEBRASKA PRIDE 7505

Birth Wt	Adj 205 Wt	12/31/23 Wt	\$W	\$F	\$G	\$B	\$C	
66	564	865	+68	+99	+45	+145	+261	
CED	BW	WW	YW	Milk	CW	Marb	RE	Fat
+10	+0.5	+70	+122	+23	+55	+0.60	+0.45	+0.042

ANGUSGS
Powered by Nogen GenCo



38^{PP} WIP GUARANTEE 3184
 Reg: `DOB: 03/25/23Tattoo: 3184

CONNEALY PAYRAISE
CRAWFORD GUARANTEE 9137
 CRAWFORD MS ARMORY D40

BASIN PAYWEIGHT 1682
 PRIDE FAIR OF CONANGA 351
 CONNEALY ARMORY
 G A R NEW DAY N2290

VERMILION DUBLIN Y210
WIP Y210 DIVIDEND 3194
 I B NEUTRONS DIVIDEND 09901

CONNEALY DUBLIN 8223
 VERMILION BLACKBIRD 4217
 B/R NEW DESIGN 036-986
 I B NEUTRONS DIVIDEND 099

Birth Wt	Adj 205 Wt	12/31/23 Wt	\$W	\$F	\$G	\$B	\$C	
76	611	860	+70	+91	+17	+109	+208	
CED	BW	WW	YW	Milk	CW	Marb	RE	Fat
+6	+1.2	+67	+117	+32	+52	+0.06	+0.46	+0.048

ANGUSGS
Powered by Nogen GenCo

WIP 39^{PP} WIP GROWTH FUND 3194
 Reg: `DOB: 03/26/23Tattoo: 3194

BASIN PAYWEIGHT 1682
DEER VALLEY GROWTH FUND
 DEER VALLEY RITA 36113

HILLTOP TRUE GRIT 9202
WIP TRUE GRIT LASS 7155
 WIP 878 LASS 7590

BASIN PAYWEIGHT 006S
 21AR O LASS 7017
 PLATTEMERE WEIGH UP K360
 DEER VALLEY RITA 9457
 SITZ ALLIANCE 7544
 HILLTOP CANDY LASS 713
 BON VIEW NEW DESIGN 878
 WITTKOPP LASS 9512

Birth Wt	Adj 205 Wt	12/31/23 Wt	\$W	\$F	\$G	\$B	\$C	
92	642	950	+76	+138	+38	+176	+285	
CED	BW	WW	YW	Milk	CW	Marb	RE	Fat
+4	+3.0	+87	+152	+30	+85	+52	+30	+0.62

ANGUSGS
Powered by Nogen GeneCo



WIP 40^{PP} WIP COMMODORE 3195
 Reg: `DOB: 03/26/23Tattoo: 3195

CONNELY COMRADE 1385
KESSLERS COMMODORE 6516
 KESSLERS RAINBOW 0595

BALDRIDGE BREAKTHROUGH A091
WIP BREAKTHROUGH INEZ 0296
 WIP LONG DISTANCE INEZ 6047

CONNELY CONSENSUS 7229
 HAPPY GEE OF CONANGA 919
 SUMMITCREST COMPLETE 1P55
 KESSLERS RAINBOW 3043
 BALDRIDGE WILLIE Y34
 BALDRIDGE EVER ENTENSE X331
 MOHLEN LONG DISTANCE 1639
 WIP MABRY INEZ 4170

Birth Wt	Adj 205 Wt	12/31/23 Wt	\$W	\$F	\$G	\$B	\$C	
72	547	790	+82	+88	+51	+138	+254	
CED	BW	WW	YW	Milk	CW	Marb	RE	Fat
+11	-1.2	+68	+119	+41	+49	+65	+63	+0.37

ANGUSGS
Powered by Nogen GeneCo

WIP 41^{OPP} WIP EPIC 3218
 Reg: `DOB: 03/27/23Tattoo: 3218

3F EPIC 4631
WIP EPIC 9091
 WIP IDENTITY STAR 3202

MYTTY CAVALRY 6318
WIP CAVALRY ERICA 0214
 WIP VR DANNY ERICA 8017

VARILEK PRODUCT 2010 04
 ZEBO QUEEN 1072
 ELLINGSON IDENTITY 9104
 WIP VRD STAR 7028
 MYTTY CAVALRY 3205
 CCC/CPAR COUNTNESS 0506
 VERMILION DANNY BOY M S283
 W I P NITE ERICA 8005

Birth Wt	Adj 205 Wt	12/31/23 Wt	\$W	\$F	\$G	\$B	\$C	
88	721	915	+78	+101	+44	+144	+245	
CED	BW	WW	YW	Milk	CW	Marb	RE	Fat
+2	+1.4	+80	+133	+24	+63	+42	+87	+0.19

ANGUSGS
Powered by Nogen GeneCo



WIP 42^{PP} WIP GROWTH FUND 3219
 Reg: `DOB: 03/27/23Tattoo: 3219

BASIN PAYWEIGHT 1682
DEER VALLEY GROWTH FUND
 DEER VALLEY RITA 36113

VERMILION DANNY BOY M S283
WIP VR DANNY BOY LASS 4211
 WIP PROCLAMATION 6556

BASIN PAYWEIGHT 006S
 21AR O LASS 7017
 PLATTEMERE WEIGH UP K360
 DEER VALLEY RITA 9457
 CONNEALY DANNY BOY
 VERMILION M LASS 2020
 THOMAS PROCLAMATION 3953
 W I P MONARCH LASS 1528

Birth Wt	Adj 205 Wt	12/31/23 Wt	\$W	\$F	\$G	\$B	\$C	
90	597	870	+69	+106	+26	+132	+229	
CED	BW	WW	YW	Milk	CW	Marb	RE	Fat
+3	+3.7	+74	+128	+34	+62	+16	+56	+0.25

ANGUSGS
Powered by Nogen GeneCo



WIP 43^{PP} WIP COMMODORE 3220
 Reg: `DOB: 03/28/23Tattoo: 3220

CONNEALY COMRADE 1385
KESSLERS COMMODORE 6516
 KESSLERS RAINBOW 0595

MYTTY CAVALRY 6318
WIP CAVALRY BLOOM 0281
 WIP FORESITE BLOOM 1843

CONNEALY CONSENSUS 7229
 HAPPY GEE OF CONANGA 919
 SUMMITCREST COMPLETE 1P55
 KESSLERS RAINBOW 3043

MYTTY CAVALRY 3205
 CCC/CPAR COUNTESS 0506
 WOODHILL FORESIGHT
 W I P L226 BLOOM 3518

Birth Wt	Adj 205 Wt	12/31/23 Wt	\$W	\$F	\$G	\$B	\$C	
72	661	940	+78	+79	+38	+117	+215	
CED	BW	WW	YW	Milk	CW	Marb	RE	Fat
+5	+1.3	+80	+135	+29	+50	+39	+33	-.022

ANGUSGS
Powered by Nogen GenCoat



WIP 44^{PP} WIP GROWTH FUND 3221
 Reg: `DOB: 03/28/23Tattoo: 3221

BASIN PAYWEIGHT 1682
DEER VALLEY GROWTH FUND
 DEER VALLEY RITA 36113

VERMILION DANNY BOY M S283
WIP VDB LASSIE 2116
 W I P MCD LASSIE 4025

BASIN PAYWEIGHT 0065
 21AR O LASS 7017
 PLATTEMERE WEIGH UP K360
 DEER VALLEY RITA 9457

CONNEALY DANNY BOY
 VERMILION M LASS 2020
 MILLCREEK DIVERSITY
 W I P SACKETT LASSIE 475

Birth Wt	Adj 205 Wt	12/31/23 Wt	\$W	\$F	\$G	\$B	\$C	
84	576	840	+67	+108	+67	+175	+300	
CED	BW	WW	YW	Milk	CW	Marb	RE	Fat
+7	+1.5	+74	+133	+23	+57	+95	+57	+0.20

ANGUSGS
Powered by Nogen GenCoat

WIP 46^{PP} WIP COMMODORE 3226
 Reg: `DOB: 03/28/23Tattoo: 3226

CONNEALY COMRADE 1385
KESSLERS COMMODORE 6516
 KESSLERS RAINBOW 0595

WOODHILL FORESIGHT
WIP FORESIGHT PRIDE 5140
 WIP NEBRASKA PRIDE 8615

CONNEALY CONSENSUS 7229
 HAPPY GEE OF CONANGA 919
 SUMMITCREST COMPLETE 1P55
 KESSLERS RAINBOW 3043

PAPA FORTE 1921
 BON VIEW GAMMER 85
 BALDRIDGE NEBRASKA 901
 W I P KRUGER PRIDE 1515

Birth Wt	Adj 205 Wt	12/31/23 Wt	\$W	\$F	\$G	\$B	\$C	
87	571	825	+68	+66	+55	+121	+230	
CED	BW	WW	YW	Milk	CW	Marb	RE	Fat
+2	+3.4	+63	+99	+32	+31	+77	+32	+0.06

ANGUSGS
Powered by Nogen GenCoat

WIP 45^{PP} WIP EPIC 3222
 Reg: `DOB: 03/28/23Tattoo: 3222

3F EPIC 4631
WIP EPIC 9076
 W I P VDB GIRL 0685

S WHITLOCK 179
WIP WHITLOCK WITCH 9087
 WIP VDB WITCH 2085

VARILEK PRODUCT 2010 04
 ZEBO QUEEN 1072
 VERMILION DANNY BOY M S283
 W I P NEBRASKA GIRL 4502

S CHISUM 6175
 S PRIDE ANNA 709
 VERMILION DANNY BOY M S283
 IB FORESIGHT WITCH 9199

Birth Wt	Adj 205 Wt	12/31/23 Wt	\$W	\$F	\$G	\$B	\$C	
89	653	825	+66	+93	+42	+136	+231	
CED	BW	WW	YW	Milk	CW	Marb	RE	Fat
+5	+0.1	+65	+113	+28	+49	+47	+60	+0.24

ANGUSGS
Powered by Nogen GenCoat

WIP 47^{PP} WIP GROWTH FUND 3228
 Reg: `DOB: 03/28/23Tattoo: 3228

BASIN PAYWEIGHT 1682
DEER VALLEY GROWTH FUND
 DEER VALLEY RITA 36113

BDAR SIGNATURE B437
WIP SIGNATURE LASS 7502
 WIP IN FOCUS LASS 3030

BASIN PAYWEIGHT 0065
 21AR O LASS 7017
 PLATTEMERE WEIGH UP K360
 DEER VALLEY RITA 9457

BOYD SIGNATURE 1014
 BDAR QUEEN MOTHER 015X
 MYTTY IN FOCUS
 IB DANNY VR LASS 1616

Birth Wt	Adj 205 Wt	12/31/23 Wt	\$W	\$F	\$G	\$B	\$C	
88	605	890	+63	+87	+36	+123	+227	
CED	BW	WW	YW	Milk	CW	Marb	RE	Fat
+6	+2.7	+70	+124	+25	+41	+35	+36	-.018

ANGUSGS
Powered by Nogen GenCoat



WIP 48^{PP} WIP COMMODORE 3229
 Reg: `DOB: 03/28/23Tattoo: 3229

CONNEALY COMRADE 1385
KESSLERS COMMODORE 6516
 KESSLERS RAINBOW 0595

BRUNS BLASTER
WIP BLASTER PRIDE 0325
 WIP Y210 PRIDE 3134

CONNEALY CONSENSUS 7229
 HAPPY GEE OF CONANGA 919
 SUMMITCREST COMPLETE 1P55
 KESSLERS RAINBOW 3043

MOGCK BULLSEYE
 BALDRIDGE BLACKBIRD 11 BAF
 VERMILION DUBLIN Y210
 W I P FORESIGHT PRIDE 0700

Birth Wt	Adj 205 Wt	12/31/23 Wt	\$W	\$F	\$G	\$B	\$C	
86	570	850	+70	+113	+58	+172	+287	
CED	BW	WW	YW	Milk	CW	Marb	RE	Fat
+3	+2.3	+88	+154	+20	+72	+75	+70	+0.18

ANGUSGS
Powered by Nogen GenCoat

WIP 49^{PP} **WIP EPIC 3231**
 Reg: `DOB: 03/28/23Tattoo: 3231

3F EPIC 4631
WIP EPIC 9076
 W I P VDB GIRL 0685

SITZ UPWARD 307R
WIP UPWARD LASSIE 7145
 WIP 9028 LASSIE 3078

VARILEK PRODUCT 2010 04
 ZEBO QUEEN 1072
 VERMILION DANNY BOY M S283
 W I P NEBRASKA GIRL 4502

CONNEALY ONWARD
 SITZ HENRIETTA PRIDE 81M
 WIP 569 NEW DESIGN 9028
 WIP 569 LASSIE 9253

Birth Wt	Adj 205 Wt	12/31/23 Wt	\$W	\$F	\$G	\$B	\$C	
91	646	780	+58	+96	+44	+140	+237	
CED	BW	WW	YW	Milk	CW	Marb	RE	Fat
+6	+0.5	+59	+104	+27	+49	+4.6	+67	+0.07

ANGUSGS
Powered by Nogen GeneCo



WIP 51^{OPP} **WIP COMMODORE 3238**
 Reg: `DOB: 03/28/23Tattoo: 3238

CONNEALY COMRADE 1385
KESSLERS COMMODORE 6516
 KESSLERS RAINBOW 0595

MAR INNOVATION 251
WIP INNOVATION EILEEN 0092
 IB DANNY VR EILEENMERE 1861

CONNEALY CONSENSUS 7229
 HAPPY GEE OF CONANGA 919
 SUMMITCREST COMPLETE 1P55
 KESSLERS RAINBOW 3043

CONNEALY IMPRESSION
 MAR FINAL KAHUNA 856
 VERMILION DANNY BOY M S283
 IB VRD EILEENMERE 817

Birth Wt	Adj 205 Wt	12/31/23 Wt	\$W	\$F	\$G	\$B	\$C	
80	546	805	+67	+102	+57	+159	+266	
CED	BW	WW	YW	Milk	CW	Marb	RE	Fat
+6	+0.2	+71	+130	+27	+55	+7.1	+69	+0.08

ANGUSGS
Powered by Nogen GeneCo



WIP 50^{PP} **WIP GUARANTEE 3236**
 Reg: `DOB: 03/28/23Tattoo: 3236

CONNEALY PAYRAISE
CRAWFORD GUARANTEE 9137
 CRAWFORD MS ARMORY D40

MOHNEN LONG DISTANCE 1639
WIP LONG DISTANCE INEZ 6047
 WIP MABRY INEZ 4170

BASIN PAYWEIGHT 1682
 PRIDE FAIR OF CONANGA 351

CONNEALY ARMORY
 G A R NEW DAY N2290

MOHNEN BRUSHPOPPER 295
 BALDRIDGE BLACKBIRD M565

VERMILION MABRY
 WIP VRD INEZ 8534

Birth Wt	Adj 205 Wt	12/31/23 Wt	\$W	\$F	\$G	\$B	\$C	
89	617	880	+74	+81	+25	+106	+216	
CED	BW	WW	YW	Milk	CW	Marb	RE	Fat
+13	-0.7	+60	+110	+37	+39	+2.5	+32	+0.46

ANGUSGS
Powered by Nogen GeneCo



WIP 52^{PP} **WIP QUARTERBACK 3242**
 Reg: `DOB: 03/29/23Tattoo: 3242

S A V QUARTERBACK 7933
VERMILION QUARTERBACK G769
 VERMILION LADY 6797

VERMILION DUBLIN Y210
WIP Y210 LASS 3240
 WIP 569 LASS 7537

S A V REGARD 4863
 S A V BLACKCAP MAY 3525

SITZ JLS GAME DAY 9630
 VERMILION LADY 2859

CONNEALY DUBLIN 8223
 VERMILION BLACKBIRD 4217

GDAR NEW DESIGN 569
 WITTKOPP LASS 9537

Birth Wt	Adj 205 Wt	12/31/23 Wt	\$W	\$F	\$G	\$B	\$C	
64	595	875	+59	+83	+27	+110	+201	
CED	BW	WW	YW	Milk	CW	Marb	RE	Fat
+7	+0.1	+57	+106	+31	+43	+0.09	+84	+0.07

ANGUSGS
Powered by Nogen GeneCo



53^{PP} **WIP ARCHITECT 3248**
 Reg: `DOB: 03/30/23Tattoo: 3248

SYDGEN BLUEPRINT
S ARCHITECT 9501
 S BLOSSOM 7514

MYTTY FOREFRONT 70X
WIP FOREFRONT LASS 3099
 W I P 569 LASS 0654

KM BROKEN BOW 002
 SITZ FLORABELLE FANNY 4735

S WHITLOCK 179
 S BLOSSOM 5525

MYTTY FOREFRONT 77P
 SPRINGVALE RITA 656

GDAR NEW DESIGN 569
 W I P VRD LASS 4014

Birth Wt	Adj 205 Wt	12/31/23 Wt	\$W	\$F	\$G	\$B	\$C	
90	726	780	+84	+105	+46	+151	+294	
CED	BW	WW	YW	Milk	CW	Marb	RE	Fat
+10	+0.2	+74	+125	+35	+68	+4.9	+7.8	+0.19

ANGUSGS
Powered by Nogen GenCoat

56^{PP} **WIP COMMODORE 3257**
 Reg: `DOB: 03/30/23Tattoo: 3257

CONNEALY COMRADE 1385
KESSLERS COMMODORE 6516
 KESSLERS RAINBOW 0595

S WHITLOCK 179
WIP WHITLOCK BLOOM 0112
 WIP 4563 BLOOM 9225

CONNEALY CONSENSUS 7229
 HAPPY GEE OF CONANGA 919
 SUMMITCREST COMPLETE 1P55
 KESSLERS RAINBOW 3043

S CHISUM 6175
 S PRIDE ANNA 709

W I P VRD 4563
 W I P RANGER BLOOM 1602

Birth Wt	Adj 205 Wt	12/31/23 Wt	\$W	\$F	\$G	\$B	\$C	
80	597	860	+59	+101	+36	+137	+244	
CED	BW	WW	YW	Milk	CW	Marb	RE	Fat
+2	+3.0	+75	+135	+24	+62	+3.0	+7.3	+0.11

ANGUSGS
Powered by Nogen GenCoat



57^{PP} **WIP EPIC 3259**
 Reg: `DOB: 03/31/23Tattoo: 3259

3F EPIC 4631
WIP EPIC 9076
 W I P VDB GIRL 0685

MYTTY WINDY 2048
WIP WINDY LASS 5259
 W I P 569 LASS 0704

VARILEK PRODUCT 2010 04
 ZEBO QUEEN 1072

VERMILION DANNY BOY M S283
 W I P NEBRASKA GIRL 4502

H A R B WINDY 758 J H
 MYTTY BAR MAID 38W

GDAR NEW DESIGN 569
 W I P LASS 2549

Birth Wt	Adj 205 Wt	12/31/23 Wt	\$W	\$F	\$G	\$B	\$C	
86	606	830	+58	+78	+47	+125	+218	
CED	BW	WW	YW	Milk	CW	Marb	RE	Fat
+8	-0.5	+53	+93	+29	+35	+5.9	+4.8	+0.15

ANGUSGS
Powered by Nogen GenCoat

54^{PP} **WIP INNOVATION 3254**
 Reg: `DOB: 03/30/23Tattoo: 3254

MAR INNOVATION 251
WIP INNOVATION 1221
 WIP FINAL PRODUCT LASS 6201

SITZ UPWARD 307R
WIP UPWARD INEZ 6182
 WIP FOCUS INEZ 1642

CONNEALY IMPRESSION
 MAR FINAL KAHUNA 856

CONNEALY FINAL PRODUCT
 IB 569 LASS 719

CONNEALY ONWARD
 SITZ HENRIETTA PRIDE 81M

MYTTY IN FOCUS
 WIP VDB INEZ 9083

Birth Wt	Adj 205 Wt	12/31/23 Wt	\$W	\$F	\$G	\$B	\$C	
86	680	845	+61	+83	+44	+127	+235	
CED	BW	WW	YW	Milk	CW	Marb	RE	Fat
+3	+2.9	+59	+96	+35	+45	+5.2	+4.2	+0.00

ANGUSGS
Powered by Nogen GenCoat



58^{PP} **WIP EPIC 3260**
 Reg: `DOB: 03/31/23Tattoo: 3260

3F EPIC 4631
WIP EPIC 9091
 WIP IDENTITY STAR 3202

SYDGEN MULTI TOOL 2432
SS MULTI TOOL QUEEN 0150
 VERMILION QUEEN 2428

VARILEK PRODUCT 2010 04
 ZEBO QUEEN 1072

ELLINGSON IDENTITY 9104
 WIP VRD STAR 7028

PA POWER TOOL 9108
 SYDGEN ESTER 9089

CCA HAY BUSTER 846T
 VERMILION QUEEN 9059

Birth Wt	Adj 205 Wt	12/31/23 Wt	\$W	\$F	\$G	\$B	\$C	
80	655	815	+62	+59	+71	+130	+220	
CED	BW	WW	YW	Milk	CW	Marb	RE	Fat
+6	-0.3	+60	+109	+27	+26	+9.7	+7.0	+0.00

ANGUSGS
Powered by Nogen GenCoat

55^{PP} **WIP TAHOE 3255**
 Reg: `DOB: 03/30/23Tattoo: 3255

TEHAMA TAHOE B767
BIG DRY TAHOE H7
 BDAR LASS 816F

KB-FULL MEASURE C40
WIP FULL MEASURE GIRL 0265
 WIP LEAD ON GIRL 8021

TEHAMA UPWARD Y238
 TEHAMA MARY BLACKBIRD Y684

BDAR UPSCALE D69
 BDAR LASS 623D

PLATTEMERE WEIGH UP K360
 KB-EMMA-TEN X-B02

CONNEALY LEAD ON
 W I P EXCLUSIVE GIRL 1090

Birth Wt	Adj 205 Wt	12/31/23 Wt	\$W	\$F	\$G	\$B	\$C	
76	611	805	+69	+104	+80	+185	+291	
CED	BW	WW	YW	Milk	CW	Marb	RE	Fat
+9	+0.1	+75	+136	+26	+61	+1.19	+4.3	-0.22

ANGUSGS
Powered by Nogen GenCoat

59^{PP} **WIP MULTI TOOL 3267**
 Reg: `DOB: 03/31/23Tattoo: 3267`

SYDGEN MULTI TOOL 2432
WIP MULTI TOOL 9035
 WIP COMRADE BLOOM 7081

CONNEALY CONSENSUS 7229
WIP CONSENSUS JET4042
 WIP 569 JET 9222

PA POWER TOOL 9108
 SYDGEN ESTER 9089
 CONNEALY COMRADE 1385
 W I P IM BLOOM 0604
 CONNEALY CONSENSUS
 BLUE LILLY OF CONANGA 16
 GDAR NEW DESIGN 569
 W I P VOLTAGE JET 8094

Birth Wt	Adj 205 Wt	12/31/23 Wt	\$W	\$F	\$G	\$B	\$C	
77	559	760	+63	+40	+62	+102	+209	
CED	BW	WW	YW	Milk	CW	Marb	RE	Fat
+10	-2.6	+41	+67	+38	+10	+92	+38	+0.28

ANGUS GS
Powered by Regen Genetics

63^{PP} **WIP GROWTH FUND 3281**
 Reg: `DOB: 04/01/23Tattoo: 3281`

BASIN PAYWEIGHT 1682
DEER VALLEY GROWTH FUND
 DEER VALLEY RITA 36113

VERMILION MABRY
WIP MABRY WITCH 6306
 IB FORESIGHT WITCH 9199

BASIN PAYWEIGHT 006S
 21AR O LASS 7017
 PLATTEMERE WEIGH UP K360
 DEER VALLEY RITA 9457
 CONNEALY DUBLIN 8223
 VERMILION LUCY 9508
 WOODHILL FORESIGHT
 I B A BLACK WITCH 2 01

Birth Wt	Adj 205 Wt	12/31/23 Wt	\$W	\$F	\$G	\$B	\$C	
76	577	860	+77	+94	+63	+157	+285	
CED	BW	WW	YW	Milk	CW	Marb	RE	Fat
+10	-0.5	+65	+119	+39	+52	+1.00	+41	+0.75

ANGUS GS
Powered by Regen Genetics

60^{PP} **WIP CROSSBOW 3269**
 Reg: `DOB: 03/31/23Tattoo: 3269`

SPRING COVE CROSSBOW
WIP CROSSBOW 0049
 WIP FORTRESS PRIDE 8080

VERMILION MABRY
WIP MABRY LASS 7126
 WIP UPGRADE LASS 2152

KM BROKEN BOW 002
 SPRING COVE PRETTY 205
 K C F BENNETT FORTRESS
 WIP 9028 PRIDE 3076
 CONNEALY DUBLIN 8223
 VERMILION LUCY 9508
 STYLES UPGRADE J59
 WITTKOPP DATELINE LASS 2554

Birth Wt	Adj 205 Wt	12/31/23 Wt	\$W	\$F	\$G	\$B	\$C	
86	596	740	+53	+83	+39	+123	+229	
CED	BW	WW	YW	Milk	CW	Marb	RE	Fat
+1	+3.5	+57	+91	+26	+39	+34	+71	-0.05

ANGUS GS
Powered by Regen Genetics

64^{PP} **WIP WAR PARTY 3286**
 Reg: `DOB: 04/02/23Tattoo: 3286`

WERNER WAR PARTY 2417
WIP WAR PARTY 8161
 WIP FORESIGHT INEZ 9183

VERMILION MABRY
WIP MABRY WITCH 6280
 IB FOCUS WITCH 1622

CONNEALY ONWARD
 BAAR USA LADY JAYE 489
 WOODHILL FORESIGHT
 W I P DATELINE INEZ 2553
 CONNEALY DUBLIN 8223
 VERMILION LUCY 9508
 MYTTY IN FOCUS
 IB 569 WITCH 9038

Birth Wt	Adj 205 Wt	12/31/23 Wt	\$W	\$F	\$G	\$B	\$C	
82	586	810	+54	+77	+46	+135	+239	
CED	BW	WW	YW	Milk	CW	Marb	RE	Fat
+4	+3.1	+64	+113	+30	+43	+56	+48	+0.07

ANGUS GS
Powered by Regen Genetics

61^{OPP} **WIP EPIC 3273**
 Reg: `DOB: 04/01/23Tattoo: 3273`

3F EPIC 4631
WIP EPIC 9076
 W I P VDB GIRL 0685

PINE COULEE CHISUM B360
WIP PC CHISUM LASS 9513
 WIP WAR PARTY LASS 6135

VARILEK PRODUCT 2010 04
 ZEBO QUEEN 1072
 VERMILION DANNY BOY M S283
 W I P NEBRASKA GIRL 4502
 S CHISUM 6175
 PINE COULEE FOREVER LADY W49
 WERNER WAR PARTY 2417
 WIP NEBRASKA LASS 7004

Birth Wt	Adj 205 Wt	12/31/23 Wt	\$W	\$F	\$G	\$B	\$C	
74	605	765	+62	+83	+42	+125	+232	
CED	BW	WW	YW	Milk	CW	Marb	RE	Fat
+6	-0.2	+56	+99	+30	+37	+42	+73	+0.18

ANGUS GS
Powered by Regen Genetics

65^{PP} **WIP EPIC 3312**
 Reg: `DOB: 04/03/23Tattoo: 3312`

3F EPIC 4631
WIP EPIC 9091
 WIP IDENTITY STAR 3202

KB-FULL MEASURE C40
WIP FULL MEASURE BEAUTY 0360
 I B IN FOCUS BEAUTY 0639

VARILEK PRODUCT 2010 04
 ZEBO QUEEN 1072
 ELLINGSON IDENTITY 9104
 WIP VRD STAR 7028
 PLATTEMERE WEIGH UP K360
 KB-EMMA-TEN X-B02
 MYTTY IN FOCUS
 IB DIRECTION BEAUTY 805

Birth Wt	Adj 205 Wt	12/31/23 Wt	\$W	\$F	\$G	\$B	\$C	
84	643	750	+77	+85	+56	+141	+255	
CED	BW	WW	YW	Milk	CW	Marb	RE	Fat
+3	+1.2	+70	+127	+34	+47	+66	+57	-0.29

ANGUS GS
Powered by Regen Genetics

62^{PP} **WIP TAHOE 3280**
 Reg: `DOB: 04/01/23Tattoo: 3280`

TEHAMA TAHOE B767
BIG DRY TAHOE H7
 BDAR LASS 816F

CCA HAY BUSTER 846T
VERMILION QUEEN 2428
 VERMILION QUEEN 9059

TEHAMA UPWARD Y238
 TEHAMA MARY BLACKBIRD Y684
 BDAR UPSCALE D69
 BDAR LASS 623D
 TC FRANKLIN 619
 VERMILION JK LASS 0312
 BALDRIDGE NEBRASKA 901
 VERMILION QUEEN 7230

Birth Wt	Adj 205 Wt	12/31/23 Wt	\$W	\$F	\$G	\$B	\$C	
75	652	780	+66	+81	+47	+128	+214	
CED	BW	WW	YW	Milk	CW	Marb	RE	Fat
+8	+0.6	+65	+115	+30	+43	+61	+56	+0.40

ANGUS GS
Powered by Regen Genetics

66^{PP} **WIP COMMODORE 3317**
 Reg: `DOB: 04/05/23Tattoo: 3317`

KESSLERS COMMODORE 6516
WIP COMMODORE 1003
 WIP MULTI TOOL POWER 9113

VERMILION MABRY
WIP MABRY INEZ 7142
 WIP FOREFRONT INEZ 2142

CONNEALY COMRADE 1385
 KESSLERS RAINBOW 0595
 SYDGEN MULTI TOOL 2432
 WIP EXTRA POWER 1769
 CONNEALY DUBLIN 8223
 VERMILION LUCY 9508
 MYTTY FOREFRONT 70X
 WIP DESTINY INEZ 8553

Birth Wt	Adj 205 Wt	12/31/23 Wt	\$W	\$F	\$G	\$B	\$C	
92	710	880	+73	+102	+34	+136	+235	
CED	BW	WW	YW	Milk	CW	Marb	RE	Fat
+4	+2.8	+82	+142	+34	+63	+28	+62	+0.05

ANGUS GS
Powered by Regen Genetics

67^{PP} **WIP EPIC 3323**
 Reg: `DOB: 04/06/23Tattoo: 3323

3F EPIC 4631
WIP EPIC 9076
 W I P VDB GIRL 0685

VERMILION MABRY
WIP MABRY EILEENMERE 6107
 IB DANNY VR EILEENMERE 1861

VARILEK PRODUCT 2010 04
 ZEBO QUEEN 1072
 VERMILION DANNY BOY M S283
 W I P NEBRASKA GIRL 4502
 CONNEALY DUBLIN 8223
 VERMILION LUCY 9508
 VERMILION DANNY BOY M S283
 IB VRD EILEENMERE 817

Birth Wt	Adj 205 Wt	12/31/23 Wt	\$W	\$F	\$G	\$B	\$C	
85	655	785	+54	+86	+35	+121	+215	
CED	BW	WW	YW	Milk	CW	Marb	RE	Fat
+10	-0.4	+55	+96	+23	+38	+34	+50	+0.09

ANGUSGS
Powered by Nogen GenCoat

71^{PP} **WIP EPIC 3349**
 Reg: `DOB: 04/09/23Tattoo: 3349

3F EPIC 4631
WIP EPIC 9076
 W I P VDB GIRL 0685

KB-FULL MEASURE C40
WIP FULL MEASURE GIRL 9078
 WIP PRIORITY GIRL 5077

VARILEK PRODUCT 2010 04
 ZEBO QUEEN 1072
 VERMILION DANNY BOY M S283
 W I P NEBRASKA GIRL 4502
 PLATTEMERE WEIGH UP K360
 KB-EMMA-TEN X-B02
 S A V PRIORITY 7283
 WIP FORESITE GIRL 1660

Birth Wt	Adj 205 Wt	12/31/23 Wt	\$W	\$F	\$G	\$B	\$C	
79	566	750	+62	+78	+53	+132	+234	
CED	BW	WW	YW	Milk	CW	Marb	RE	Fat
+9	-0.9	+59	+99	+25	+32	+60	+61	-.032

ANGUSGS
Powered by Nogen GenCoat

68^{PP} **WIP MULTI TOOL 3329**
 Reg: `DOB: 04/07/23Tattoo: 3329

SYDGEN MULTI TOOL 2432
WIP MULTI TOOL 9035
 WIP COMRADE BLOOM 7081

VERMILION MABRY
WIP MABRY GIRL 4198
 WIP LEAD ON GIRL 9087

PA POWER TOOL 9108
 SYDGEN ESTER 9089
 CONNEALY COMRADE 1385
 W I P IM BLOOM 0604
 CONNEALY DUBLIN 8223
 VERMILION LUCY 9508
 CONNEALY LEAD ON
 W I P N123 GIRL 5017

Birth Wt	Adj 205 Wt	12/31/23 Wt	\$W	\$F	\$G	\$B	\$C	
85	557	775	+61	+79	+64	+144	+247	
CED	BW	WW	YW	Milk	CW	Marb	RE	Fat
+2	+0.8	+54	+97	+33	+36	+96	+42	+0.29

ANGUSGS
Powered by Nogen GenCoat

72^{PP} **WIP EPIC 3350**
 Reg: `DOB: 04/09/23Tattoo: 3350

3F EPIC 4631
WIP EPIC 9076
 W I P VDB GIRL 0685

CONNEALY CONSENSUS 7229
WIP CONSENSUS LASS 6117
 WIP FINAL PRODUCT LASS 2004

VARILEK PRODUCT 2010 04
 ZEBO QUEEN 1072
 VERMILION DANNY BOY M S283
 W I P NEBRASKA GIRL 4502
 CONNEALY CONSENSUS
 BLUE LILLY OF CONANGA 16
 CONNEALY FINAL PRODUCT
 I B VDB LASS 0838

Birth Wt	Adj 205 Wt	12/31/23 Wt	\$W	\$F	\$G	\$B	\$C	
79	582	735	+63	+75	+44	+119	+214	
CED	BW	WW	YW	Milk	CW	Marb	RE	Fat
+7	+0.2	+60	+102	+26	+35	+50	+52	+0.10

ANGUSGS
Powered by Nogen GenCoat

69^{PP} **WIP EPIC 3338**
 Reg: `DOB: 04/07/23Tattoo: 3338

3F EPIC 4631
WIP EPIC 9076
 W I P VDB GIRL 0685

SYDGEN MULTI TOOL 2432
WIP MULTI TOOL PRIDE 9179
 WIP UPWARD PRIDE 4092

VARILEK PRODUCT 2010 04
 ZEBO QUEEN 1072
 VERMILION DANNY BOY M S283
 W I P NEBRASKA GIRL 4502
 PA POWER TOOL 9108
 SYDGEN ESTER 9089
 SITZ UPWARD 307R
 IB WIP VRD PRIDE 653

Birth Wt	Adj 205 Wt	12/31/23 Wt	\$W	\$F	\$G	\$B	\$C	
84	613	815	+66	+87	+45	+132	+235	
CED	BW	WW	YW	Milk	CW	Marb	RE	Fat
+9	-0.2	+61	+105	+29	+45	+41	+85	-.009

ANGUSGS
Powered by Nogen GenCoat

73^{PP} **WIP WAR PARTY 3353**
 Reg: `DOB: 04/09/23Tattoo: 3353

WERNER WAR PARTY 2417
WIP WAR PARTY 8161
 WIP FORESIGHT INEZ 9183

CONNEALY SPUR
WIP SPUR POWER 9117
 WIP 569 POWER 2121

CONNEALY ONWARD
 BAAR USA LADY JAYE 489
 WOODHILL FORESIGHT
 W I P DATELINE INEZ 2553
 CONNEALY STIMULUS 8419
 JAZZA OF CONANGA 8594
 GDAR NEW DESIGN 569
 W I P EXCLUSIVE POWER 3616

Birth Wt	Adj 205 Wt	12/31/23 Wt	\$W	\$F	\$G	\$B	\$C	
88	674	885	+56	+78	+38	+117	+218	
CED	BW	WW	YW	Milk	CW	Marb	RE	Fat
+3	+3.5	+63	+107	+27	+41	+35	+65	+0.005

ANGUSGS
Powered by Nogen GenCoat

70^{PP} **WIP MULTI TOOL 3344**
 Reg: `DOB: 04/08/23Tattoo: 3344

SYDGEN MULTI TOOL 2432
WIP MULTI TOOL 9184
 WIP VDB LASSIE 2116

EF COMPLEMENT 8088
WIP COMPLIMENT PRIDE 7021
 WIP PRIORITY PRIDE 5104

PA POWER TOOL 9108
 SYDGEN ESTER 9089
 VERMILION DANNY BOY M S283
 W I P MCD LASSIE 4025
 BASIN FRANCHISE P142
 EF EVERELDA ENTENSE 6117
 S A V PRIORITY 7283
 WIP DANNY PRIDE 8518

Birth Wt	Adj 205 Wt	12/31/23 Wt	\$W	\$F	\$G	\$B	\$C	
86	567	800	+54	+68	+61	+129	+208	
CED	BW	WW	YW	Milk	CW	Marb	RE	Fat
+9	+0.6	+52	+86	+26	+21	+92	+16	-.003

ANGUSGS
Powered by Nogen GenCoat





77^{PP} **WIP WAR PARTY 3376**
 Reg: `DOB: 04/13/23Tattoo: 3376

WERNER WAR PARTY 2417
WIP WAR PARTY 8161
 WIP FORESIGHT INEZ 9183

CONNEALY ONWARD
 BAAR USA LADY JAYE 489
 WOODHILL FORESIGHT
 W I P DATELINE INEZ 2553

SYDGEN ENHANCE
WIP ENHANCE LASS 9097
 WIP FINALPRODUCT LASS 2020

SYDGEN EXCEED 3223
 SYDGEN RITA 2618
 CONNEALY FINAL PRODUCT
 W I P VDB LASS 0669

Birth Wt	Adj 205 Wt	12/31/23 Wt	\$W	\$F	\$G	\$B	\$C	
78	632	830	+62	+83	+57	+139	+231	
CED	BW	WW	YW	Milk	CW	Marb	RE	Fat
-3	+4.0	+76	+133	+26	+48	+67	+71	-.010

ANGUS GS
Powered by Nogen Genetics

74^{PP} **WIP COMMODORE 3355**
 Reg: `DOB: 04/10/23Tattoo: 3355

KESSLERS COMMODORE 6516
WIP COMMODORE 1003
 WIP MULTI TOOL POWER 9113

K C F BENNETT FORTRESS
WIP FORTRESS STAR 7149
 WIP VDB STAR 9135

CONNEALY COMRADE 1385
 KESSLERS RAINBOW 0595
 SYDGEN MULTI TOOL 2432
 WIP EXTRA POWER 1769

CONNEALY CONSENSUS
 THOMAS PATRICIA 9705
 VERMILION DANNY BOY M S283
 W I P ULTRA STAR 3044

Birth Wt	Adj 205 Wt	12/31/23 Wt	\$W	\$F	\$G	\$B	\$C	
85	657	885	+75	+78	+38	+116	+197	
CED	BW	WW	YW	Milk	CW	Marb	RE	Fat
+3	+1.8	+75	+131	+34	+47	+33	+67	-.003

ANGUS GS
Powered by Nogen Genetics

78^{PP} **WIP EPIC 3377**
 Reg: `DOB: 04/13/23Tattoo: 3377

3F EPIC 4631
WIP EPIC 9076
 W I P VDB GIRL 0685

WERNER WAR PARTY 2417
WIP WAR PARTY LASS 6133
 IB 569 LASS 9001

VARILEK PRODUCT 2010 04
 ZEBO QUEEN 1072
 VERMILION DANNY BOY M S283
 W I P NEBRASKA GIRL 4502

CONNEALY ONWARD
 BAAR USA LADY JAYE 489
 GDAR NEW DESIGN 569
 I B J30 LASS 402

Birth Wt	Adj 205 Wt	12/31/23 Wt	\$W	\$F	\$G	\$B	\$C	
85	575	780	+65	+82	+38	+120	+221	
CED	BW	WW	YW	Milk	CW	Marb	RE	Fat
+7	-0.5	+59	+99	+30	+40	+37	+59	+0.007

ANGUS GS
Powered by Nogen Genetics

75^{PP} **WIP SPUR 3361**
 Reg: `DOB: 04/10/23Tattoo: 3361

CONNEALY SPUR
WIP SPUR 9262
 WIP FOREFRONT JET 2161

PINE COULEE CHISUM B360
WIP PC CHISUM PRIDE 8299
 WIP LONG DISTANCE PRIDE 5045

CONNEALY STIMULUS 8419
 JAZZA OF CONANGA 8594
 MYTTY FOREFRONT 70X
 W I P EXCLUSIVE JET 3578

S CHISUM 6175
 PINE COULEE FOREVER LADY W49
 MOHNEN LONG DISTANCE 1639
 WIP FINAL PRODUCT PRIDE 3024

Birth Wt	Adj 205 Wt	12/31/23 Wt	\$W	\$F	\$G	\$B	\$C	
79	570	720	+57	+76	+57	+133	+267	
CED	BW	WW	YW	Milk	CW	Marb	RE	Fat
+5	+1.8	+56	+101	+26	+38	+81	+41	+0.026

ANGUS GS
Powered by Nogen Genetics

79^{PP} **WIP MULTI TOOL 3391**
 Reg: `DOB: 04/15/23Tattoo: 3391

SYDGEN MULTI TOOL 2432
WIP MULTI TOOL 9184
 WIP VDB LASSIE 2116

BARSTOW BANKROLL B73
WIP BANKROLL BLOOM 8088
 WIP FOREFRONT BLOOM 2090

PA POWER TOOL 9108
 SYDGEN ESTER 9089
 VERMILION DANNY BOY M S283
 W I P MCD LASSIE 4025

BARSTOW CASH
 BARSTOW MISS DIANNA Z25
 MYTTY FOREFRONT 70X
 WIP VDB BLOOM 9049

Birth Wt	Adj 205 Wt	12/31/23 Wt	\$W	\$F	\$G	\$B	\$C	
85	587	770	+50	+77	+55	+132	+221	
CED	BW	WW	YW	Milk	CW	Marb	RE	Fat
+9	+0.2	+54	+102	+20	+30	+72	+60	+0.020

ANGUS GS
Powered by Nogen Genetics

76^{PP} **WIP MULTI TOOL 3370**
 Reg: `DOB: 04/12/23Tattoo: 3370

SYDGEN MULTI TOOL 2432
WIP MULTI TOOL 9184
 WIP VDB LASSIE 2116

CONNEALY COMRADE 1385
WIP COMRADE PRIDE 8032
 WIP MABRY PRIDE 6147

PA POWER TOOL 9108
 SYDGEN ESTER 9089
 VERMILION DANNY BOY M S283
 W I P MCD LASSIE 4025

CONNEALY CONSENSUS 7229
 HAPPY GEE OF CONANGA 919
 VERMILION MABRY
 WIP DANNY PRIDE 8518

Birth Wt	Adj 205 Wt	12/31/23 Wt	\$W	\$F	\$G	\$B	\$C	
80	608	775	+64	+72	+65	+137	+249	
CED	BW	WW	YW	Milk	CW	Marb	RE	Fat
+12	-1.7	+49	+86	+32	+27	+87	+53	-.017

ANGUS GS
Powered by Nogen Genetics

80^{PP} **WIP EPIC 3398**
 Reg: `DOB: 04/16/23Tattoo: 3398

3F EPIC 4631
WIP EPIC 9076
 W I P VDB GIRL 0685

CONNEALY FINAL PRODUCT
WIP FINAL PRODUCT LASS 5142
 WIP FOCUS LASS 1613

VARILEK PRODUCT 2010 04
 ZEBO QUEEN 1072
 VERMILION DANNY BOY M S283
 W I P NEBRASKA GIRL 4502

CONNEALY PRODUCT 568
 EBONISTA OF CONANGA 471
 MYTTY IN FOCUS
 WITTKOPP 569 LASS

Birth Wt	Adj 205 Wt	12/31/23 Wt	\$W	\$F	\$G	\$B	\$C	
87	646	875	+62	+81	+42	+123	+226	
CED	BW	WW	YW	Milk	CW	Marb	RE	Fat
+8	-1.3	+55	+95	+28	+37	+50	+46	+0.019

ANGUS GS
Powered by Nogen Genetics



W 81^{OPP} **WIP CAVALRY 3423**
Reg: `DOB: 04/22/23Tattoo: 3423

- MYTTY CAVALRY 6318
- WIP CAVALRY 0467**
- WIP SIGNATURE CAT 7193

- CONNEALY COMRADE 1385
- WIP COMRADE BEAUTY 5026**
- WIP FOREFRONT BEAUTY 3069

- MYTTY CAVALRY 3205
- CCC/CPAR COUNTESS 0506
- BDAR SIGNATURE B437
- WIP VR DANNY BOY CAT 3096

- CONNEALY CONSENSUS 7229
- HAPPY GEE OF CONANGA 919

- MYTTY FOREFRONT 70X
- IB VR DANNY BEAUTY 834

Birth Wt	Adj 205 Wt	12/31/23 Wt	\$W	\$F	\$G	\$B	\$C	
80	587	745	+60	+57	+43	+100	+199	
CED	BW	WW	YW	Milk	CW	Marb	RE	Fat
+11	-1.2	+45	+78	+30	+19	+5.2	+4.5	+0.15

ANGUSGS
Powered by Nogen GenCoat

W 83^{PP} **WIP MULTI TOOL 3429**
Reg: `DOB: 04/26/23Tattoo: 3429

- SYDGEN MULTI TOOL 2432
- WIP MULTI TOOL 9035**
- WIP COMRADE BLOOM 7081

- JMB TRACTION 292
- WIP TRACTION BEAUTY 8237**
- IB 569 BEAUTY 9280

- PA POWER TOOL 9108
- SYDGEN ESTER 9089
- CONNEALY COMRADE 1385
- WIP IM BLOOM 0604

- SITZ TOP GAME 561X
- JMB EMULOTA 013

- GDAR NEW DESIGN 569
- IB LEAD ON BEAUTY 613

Birth Wt	Adj 205 Wt	12/31/23 Wt	\$W	\$F	\$G	\$B	\$C	
74	619	800	+58	+68	+73	+141	+238	
CED	BW	WW	YW	Milk	CW	Marb	RE	Fat
+3	+2.4	+66	+115	+22	+34	+1.07	+0.67	+0.28

ANGUSGS
Powered by Nogen GenCoat

W 82^{PP} **WIP MULTI TOOL 3428**
Reg: `DOB: 04/23/23Tattoo: 3428

- SYDGEN MULTI TOOL 2432
- WIP MULTI TOOL 9184**
- WIP VDB LASSIE 2116

- CONNEALY CONSENSUS 7229
- WIP CONSENSUS PRIMROSE 4203**
- IB COALITION PRIMROSE 733

- PA POWER TOOL 9108
- SYDGEN ESTER 9089
- VERMILION DANNY BOY M S283
- WIP MCD LASSIE 4025

- CONNEALY CONSENSUS
- BLUE LILLY OF CONANGA 16
- K C F BENNETT COALITION SCC
- IB PRIMROSE 099

Birth Wt	Adj 205 Wt	12/31/23 Wt	\$W	\$F	\$G	\$B	\$C	
88	593	710	+50	+58	+46	+104	+206	
CED	BW	WW	YW	Milk	CW	Marb	RE	Fat
+5	-0.3	+40	+69	+27	+16	+5.8	+3.3	+0.03

ANGUSGS
Powered by Nogen GenCoat

WITTKOPP
ANGUS



Yearling Heifers

Following the bull sale, we will be offering 80 commercial yearling heifers. The heifers come from cows with a strong AI sire background and offer outstanding maternal and performance traits. They are sired by our herd sires or the referenced AI sires. Buyers will take possession of the heifers on sale day.



*See you
next year!*

WITTKOPP ANGUS

*Thank you for attending our
36th Annual Sale!*

*We appreciate
your support of our program.*



36th Annual
Production Sale

Thursday
February 8, 2024

1:00 pm • Glasgow Stockyards • Glasgow, MT

— *Reference Sires Include* —

S Architect 9501 • Barstow Bankroll B73
Crawford Guarantee 9137 • Deer Valley Growth Fund
Kesslers Commodore 6516 • Connealy National 390C

Curt and Sue Wittkopp

Circle, Montana • 406-974-3552 (Cell) • 406-485-3552 (Home) • www.wittkoppangus.com

**WITTKOPP
ANGUS**

PO Box 260
Circle, MT 59215

Return Service Requested



FIRST CLASS

US Postage
Paid
Ballyhoo Printing
59457

FIRST CLASS